

PURA PRONTO

C 2M 2P H W

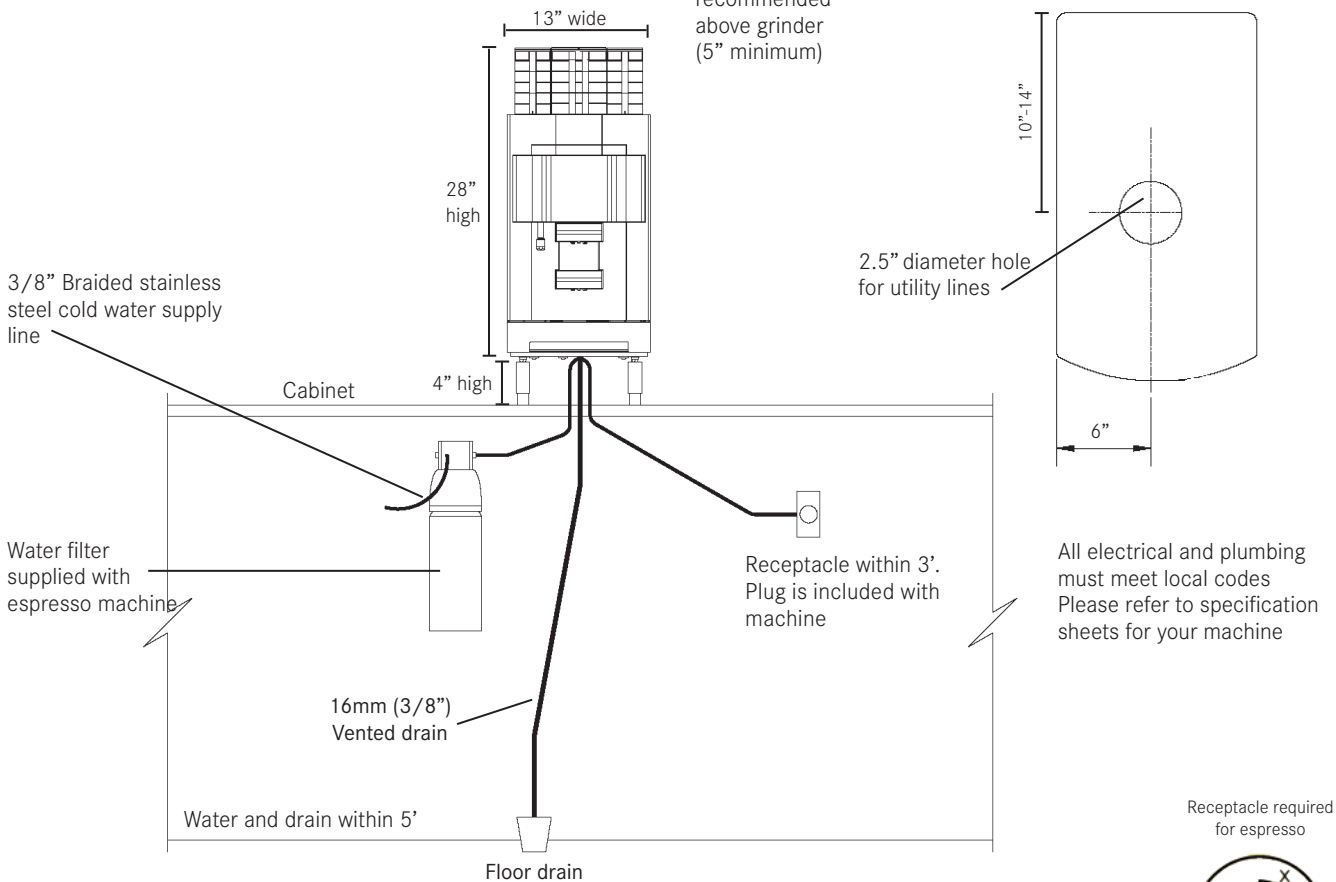
Franke Coffee Systems Americas

800 Aviation Parkway
Smyrna, TN USA 37167
Tel: 1 800 310 5710
Fax: 1 615 793 5940
email: fs-coffeesales.us@franke.com
www.us.franke-cs.com

1" minimum clearance
on sides and rear of
machine

10" of clearance
recommended
above grinder
(5" minimum)

Scale drawing for
counter drill hole



Receptacle required
for espresso



L6-30R

Unit	Height	Width	Depth	Ship weight	Voltage/Phase/Cycle	Wattage	Amp Load	Amp Circuit	Plug	Water line	Water hardness	Drain
Espresso	28" 690mm	13" 320mm	24" 590mm	66lbs 30kg	208-240/1/60	4400	22 A	30 A	NEMA L6-30P	G 3/8"	1-5 gpg	16mm ID vented

COFFEE
SYSTEMS

FRANKE

© 2012 - Franke Coffee Systems Americas - This document is the confidential and proprietary property of Franke Coffee Systems Americas, and shall not be reproduced in any form of media without the expressed written permission of a Franke Coffee Systems Americas representative. Due to continuous product development, Franke Coffee Systems Americas reserves the right to make changes in design and specification without prior notice. REV 09 Feb 2012 • G800005602FCG Pura Pronto install guide_new.indd • Under license of Franke Technology and Trademark, Ltd. Switzerland. Printed in U.S.A.