



SINFONIA 1-STEP F13

M 2M CF F13

M 3M CF F13

M 2M HD ASP CF F13

M 3M HD ASP CF F13

The Sinfonia is a delight for all the senses, for hidden behind its attractive design is state of the art technology for a unique and varied coffee enjoyment. It masters the entire classical coffee repertoire for the catering trade, down to the smallest detail. With a guarantee of quality in everything it does. It is precise, versatile and tireless in its performances, for it is capable of withstanding the most punishing schedules. So treat your guests to the exquisite enjoyment of Sinfonia. With a high-performance coffee machine which, like all Franke coffee machines, excels in one particular area:

The art of excellent coffeemaking

Included with professional installation, one year periodic maintenance program and a 24/7/365 customer support program, the Sinfonia is so reliable, it also boasts an impressive 18 month parts and labor warranty - **The longest standard warranty in the business**

COFFEE
SYSTEMS



FRANKE

SINFONIA 1-STEP F13

M 2M CF F13

M 3M CF F13

M 2M HD ASP CF F13

M 3M HD ASP CF F13

FEATURES & BENEFITS

Built for the busiest of establishments, the Sinfonia 1-Step excels in a high capacity environment and is rated for up to 500 cups per day. If your business requires features like the massive 21 gram brewing chamber for true triple shot espressos, a 3rd grinder for Café Cremes and European style coffees, the Sinfonia 1-Step is the answer. This machine uses the patented Franke MilkSystem™ to deliver espresso based beverages including cappuccinos, lattes and iced drinks at the touch of a button. The Sinfonia 1-Step's digitally controlled refrigerator holds 2 gallon milk jugs and supports 2 milk types. Automated rinsing and cleaning cycles delivers excellent machine reliability while taking the guesswork out of daily cleaning.

With a demanding specialty coffee program, what's under the hood is just as important. The Sinfonia 1-Step is built to last, producing up to 80,000 drinks before major service is needed. The hardened steel and aluminum brewing group is built Franke tough, with major components designed to last the life of the machine. A dual boiler system sporting impressive 6.3kW heating elements and 2 industrial strength steam valves give the Sinfonia 2-Step steam performance that is a cut above the rest. With the proven dependability of almost 8,000 machines installed, the only thing you'll need to focus on is the customer.

Features include:

- Up to 28 programmable products plus steam and hot water
- Adjustable height coffee dispenser accommodates up to a 24oz cup
- One touch drink preparation - up to 60 milk based beverages per hour
- One touch grind, tamp & brew - up to 180 2oz espressos per hour
- 21g brew chamber - true triple shot extraction in less than 30 seconds
- 2.5 lb bean hoppers hold enough beans to produce 150 single shot espressos
- 2 low-noise professional Ditting grinders with long life ceramic burrs
- Dual stainless steel boilers, unlimited steam and regulated brewing temperature
- Hot water bypass valve for true Americanos
- Franke MilkSystem™ with refrigerated milk pumps
- Refrigerator holds (2) gallon milk jugs and dispenses 2 milk types
- Franke Auto Steam Pro™ with programmable hot water outlet for added drink flexibility
- Automatic rinse program to keep equipment clean throughout the day
- Quick and easy daily cleaning takes less than 10 minutes with no disposable parts
- Professional installation and 1 year periodic maintenance program
- 18 month parts and labor warranty - the longest standard warranty in the business
- Included 365/24/7 customer support program

Daily output	Cup height	Hopper	Finish
up to 350	3"-7" 80-180mm	(2) 2.5lbs ea (2) 1.1kg ea	Stainless steel w/ anthracite panels

Programming	Display
28 Programmable products	Graphics display

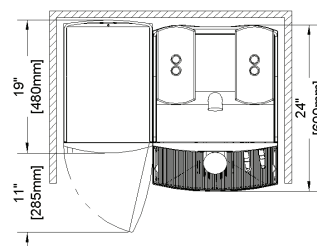
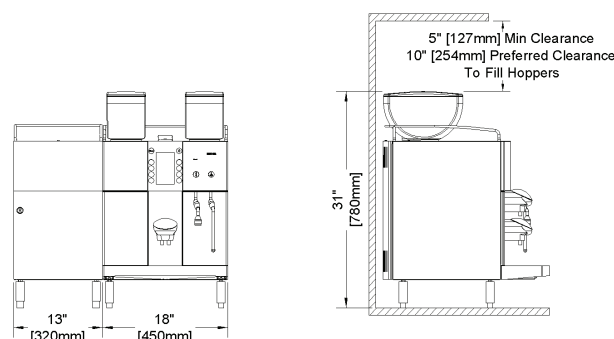
Unit	Height	Width	Depth	Ship weight	Voltage/Phase/Cycle	Wattage	Amp Load	Amp Circuit	Plug	Water line	Water hardness	Drain
Espresso	31" 780mm	18" 450mm	24" 600mm	200 lbs 91 kg	208/1/60	6900	33 A	50 A	NEMA 6-50P	G 3/8"	1-5 gpg	16mm ID vented
Refrigerator	24" 600mm	13" 320mm	19" 480mm	75 lbs 34 kg	110 /1/60	75	0.7 A	15 A	NEMA 5-15P	n/a	n/a	n/a

Franke Coffee Systems, N.A.

800 Aviation Parkway
Smyrna, TN 37167 USA
Tel +1 800 310 5710
Fax +1 615 793 5940
email: info.fcsna@franke.com
www.franke-cs.com

COFFEE
SYSTEMS

FRANKE



Model	# Grinders	Milk types	Hot water	Hot Milk	Cold Milk	Foamed Milk	Steam	Autosteam™	Autosteam Pro™	13" Side Refrigerator	27" Undercounter Ref'r	Flavor Station	Part number
M 2M CF F13	2	2	•	•	•	•	•	•	•	•	•	•	70003077
M 3M CF F13	3	2	•	•	•	•	•	•	•	•	•	•	70003078
M 2M HD ASP CF F13	2	2	•	•	•	•	•	•	•	•	•	•	70003936
M 3M HD ASP CF F13	3	2	•	•	•	•	•	•	•	•	•	•	70003937