



Your responsibility for the perfect coffee experience

The perfect coffee experience depends on a perfectly cleaned coffee machine. Increase the quality of your products!

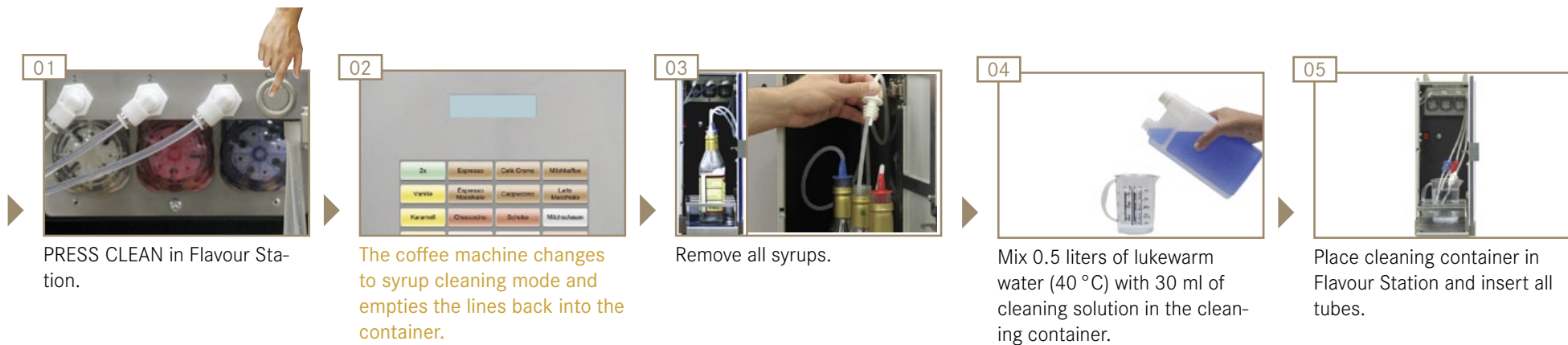
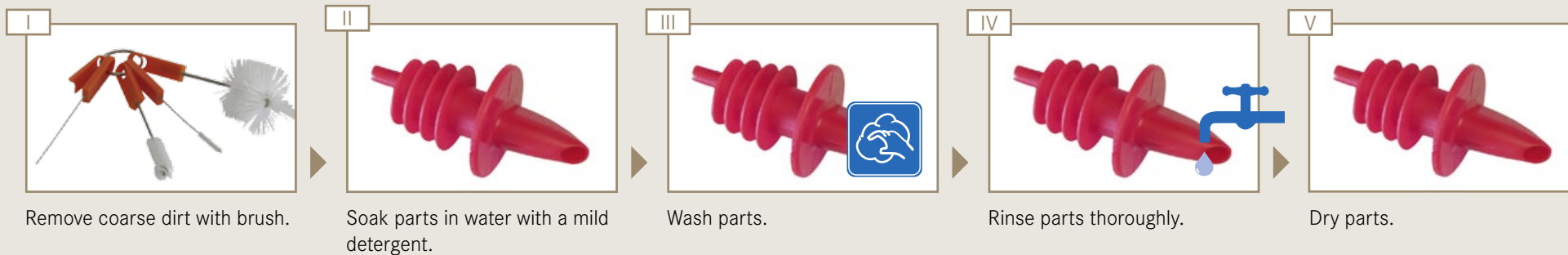
Clean your Flavour Station at least once a week and more frequently if necessary.

Follow the 5-step method for all removable parts.

Accessories required:

- Microfiber cloth
- Brush set
- Cleaning solution
- Cleaning container

5-step method for removable parts





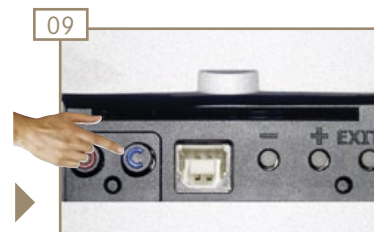
Press CLEAN on Spectra S.
Syrup system is cleaned.



Remove cleaner. Fill cleaning container with 0.5 liters of lukewarm water.



Place cleaning container in Flavour Station and insert all tubes.



Press CLEAN on Spectra S.
Syrup system is rinsed.



Observe sequence

So that you and your customers do not have any surprises. Note the assignment of the product buttons when inserting the syrups.



Remove cleaner.
Place syrups in the Flavour Station and insert all tubes.



Press CLEAN on the Spectra S. The Spectra S starts the syrup priming.

Syrup priming



Press and hold the first product button (first row, far right).



Syrup is drawn in.



Release the product button if syrup escapes from the outlet.
The syrup variety is ready.



Repeat the procedure with the second and third product buttons (syrup varieties).



All syrups are ready to use.