



Instructions  
for use

# COFFEE GRINDER



CG 8010

**COFFEE GRINDER**

## CONTENTS

4	Congratulations
5	Catler recommends safety first
8	Know your Coffee Grinder CG 8010
10	Assembling your Coffee Grinder CG 8010
11	Operating your Coffee Grinder CG 8010
14	Hints & tips
16	Care and Cleaning
18	Troubleshooting

LESS 0 MORE

CUPS

ADJUST AMOUNT

AMOUNT

START | CANCEL

# Congratulations

on the purchase of your new Catler Coffee Grinder CG 8010.

## CATLER RECOMMENDS SAFETY FIRST

We at Catler are very safety conscious. We design and manufacture consumer products with the safety of you, our valued customer foremost in mind. In addition we ask that you exercise a degree of care when using any electrical appliance and adhere to the following precautions:

### IMPORTANT SAFEGUARDS FOR YOUR COFFEE GRINDER CG 8010

- Carefully read all instructions before operation and save for future reference.
- Remove and safely discard any packaging material and promotional labels before using the appliance for the first time.
- To eliminate a choking hazard for young children, remove and safely discard the protective cover fitted to the power plug of this appliance.
- This appliance has been designed specifically for the purpose of grinding roasted coffee beans only. Under no circumstances should this product be used for other purposes than it is intended.
- This appliance is not designed to grind pre ground coffee in bean hopper. Under no circumstances should this product be used that is sticky, or extremely hard, or make pastes of any fruits, seeds or herbs i.e. curry pastes, nut batters.
- Do not insert any metal objects or similar product into the bean hopper which could damage or negatively influence the device operation.
- Do not place the appliance near the edge of a bench or table during operation. Ensure that the surface is level, clean and free of water.
- Do not place the appliance on or near a hot gas burner, electric element or where it could touch a heated oven.
- Do not operate the appliance on a sink drain board.
- Before you connect the appliance into the power outlet make sure the voltage on the rating label corresponds to the voltage in your power outlet.
- Always ensure the appliance is properly assembled before connecting to a power outlet and operating. Follow the instructions provided in this book.
- Ensure the surface is level, clean and free of water.
- This appliance is not intended to be operated by means of an external timer or separate remote control system.
- Before operation, ensure the bean hopper lid is securely attached to the hopper.
- The device should not be switched on until the bean hopper and hopper lid are locked into position in the grinding chamber.
- Do not operate the device without locking the bean hopper lid in position. Keep fingers, hands, hair, clothing and utensils away from the bean hopper during operation.
- Do not move the appliance if turned on. Do not manipulate with the appliance if placed on the power base and turned on.
- Do not put metal or similar items into the jug as this may damage or affect the operation of the unit.
- Always ensure the START/CANCEL button has been pressed to cancel before attempting to move the appliance, when the appliance is not in use and before cleaning and storing. The appliance is turned off if button illumination goes off. Now, you can unplug the appliance from the power outlet.

- If you do not use the appliance for a long time or you attempt to leave unattended, unplug the appliance from the power outlet.
- Do not disconnect the appliance from the power point by pulling the electric cable - it may damage the electric cable/power point. Disconnect the cable from the power point by gently pulling the plug of the electric cable.
- Do not operate the device for longer than 2 minutes as this could cause overheating. Allow the Catler Coffee Grinder to cool down for 20 minutes after long operation.
- Use only supplied accessories or recommended accessories by a manufacturer. Otherwise it may result in fire, electric shock or injury to persons.
- Keep the appliance clean. Refer to Care and Cleaning (page 16).

**WARNING:**

**DO NOT WASH THE POWER BASE UNDER RUNNING WATER.**

**WARNING:**

**TO PROTECT AGAINST ELECTRIC SHOCK, DO NOT IMMERSE THE POWER BASE, POWER CORD OR POWER PLUG IN WATER OR ALLOW MOISTURE TO COME IN CONTACT WITH THESE PARTS.**

- Do not remove the jug from the power base during operation.
- The appliance is not intended for use by young children or infirm persons unless they have been adequately supervised by a responsible person to ensure they can use the appliance safely.

## IMPORTANT SAFEFUARDS FOR ALL ELECTRICAL APPLIANCES

- This appliance is for household use only.
- Unwind the power cord fully before use.
- Do not let the cord hang over the edge of a table or counter, touch hot surfaces or become knotted.
- This appliance is not intended for use by persons (including children) with reduces physical, sensory or mental capabilities or lack of experience and knowledge, unless they have been given supervision or instruction concerning use of the appliance by a person responsible for their safety.
- Children should be supervised to ensure that they do not play with this appliance.
- It is recommended to inspect the appliance regularly. Do not use the appliance if power supply cord, plug or appliance becomes damaged in any way. Return the entire appliance to the nearest authorised Catler Service Centre for examination and/or repair.
- Any maintenance other than cleaning should be performed at an authorised Catler Service Centre.
- Do not use this appliance for other than its intended use. Do not use in moving vehicles or boats. Do not use outdoors.
- The installation of a residual current device (safety switch) is recommended to provide additional safety protection when using electrical appliances. It is advisable that a safety switch with a rated residual operating current not exceeding 30mA be installed in the electrical circuit supplying the appliance. See your electrician for professional advice.
- For the security reasons, we recommend to plug the Catler Coffee Grinder directly to its own circuit, separate from other appliances. It is not recommended using hub or extension cord.

### WARNING:

**DO NOT OPERATE THE APPLIANCE ON AN INCLINED SURFACE. DO NOT MOVE THE APPLIANCE WHILE IT IS SWITCHED ON.**

### WARNING:

**ALWAYS ENSURE THE BEAN HOPPER IS INSERTED FIRMLY AND LOCKED PROPERLY.**

### WARNING:

**THE POWER PLUG WHEN PLUGGED MUST REMAIN ACCESSIBLE FOR EASY REMOVING.**

**SAVE THESE INSTRUCTIONS  
HOUSEHOLD USE ONLY**

## KNOW YOUR COFFEE GRINDER CG 8010

### Bean Hopper Lid

Air tight seal to maximise bean freshness.

### Bean Hopper

450g bean hopper with locking system for easy removal and bean transfer.

### Backlit LCD Screen

Displays grind setting, number of shots/cups and customised amount.

### ADJUST AMOUNT Dial

Adjusts preset amount 'Less' or 'More' to suit personal taste.

### AMOUNT Button

Selects number of shots or cups.

### Grind Outlet

### Grind Catch Tray

Catches grind overspill.  
Removable for easy cleaning.

### Slip Reducing Feet

## Not Shown

### Grinding Chamber

Minimises static of beans before dispensing.

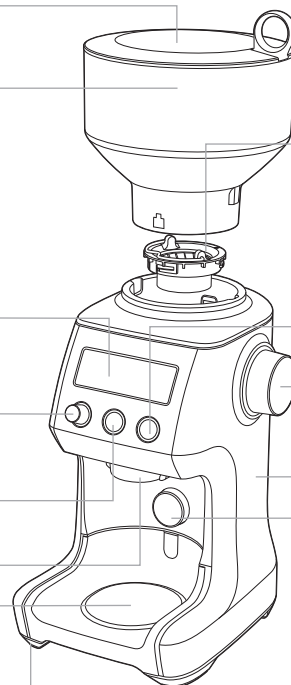
### Automatic Thermal Safety Shut Off

Protects motor from overheating.

### Power Saving/Sleep Mode

Unit powers down to standby after 5 minutes of non use.

### Cord Storage



### Hardened Stainless Steel Conical Burrs

Reduce grinding heat to protect the oils in the coffee bean.

- Removable Upper Burr
- Lower Burr

### START/CANCEL Button

Starts & stops operation.

### Grind Size Dial

25 custom grind settings from espresso to plunger.

### Brushed Stainless Steel Body

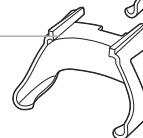
### Portafilter Activation Switch

## Accessories

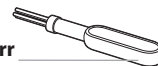
### Portafilter Cradle 50-54mm



### Portafilter Cradle 58mm



### Conical Burr Cleaning Brush



### Container Cap

### Container Lid



### Grinds Container

For storing ground coffee.



Operating

## ASSEMBLING YOUR COFFEE GRINDER CG 8010

### Before first use

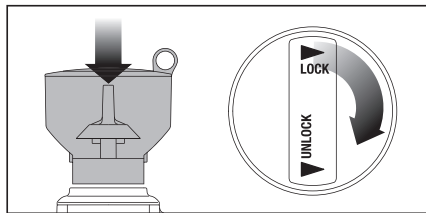
Before first use, remove and safely discard all promotional labels and packing materials attached to the device.

Wash hopper, cradles, grind container, container lid and cleaning brush in warm soapy water and dry thoroughly. Wipe exterior of grinder with a soft damp cloth and dry thoroughly.

Place grinder on flat level surface and plug power cord into 230-240V outlet and switch Power 'ON'.

### Assembling the grinder Bean Hopper

Align tabs and place bean hopper into position. Turn the bean hopper dial 90° to lock into position. Fill with coffee beans and place lid on top of bean hopper.



The bean hopper can be removed by turning knob anti clockwise and lifting upwards to pull bean hopper out.

The locking system allows you to remove and transfer hopper without having to remove the beans.

#### NOTE:

If Bean Hopper has not been locked into position, 'LOCK BEAN HOPPER' message will be displayed on the LCD screen disabling the operation of the grinder for safety.

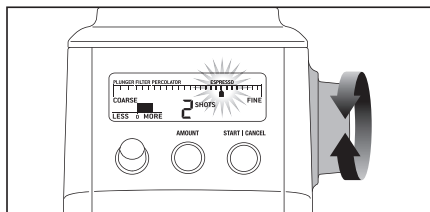
## OPERATING YOUR COFFEE GRINDER CG 8010

### STEP 1: Selecting your Grind Size

For each coffee style, Espresso, Percolator, Filter and Plunger, the grind size will differ.

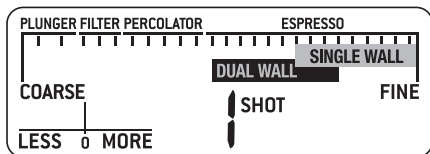
Within each coffee style there is a range of settings.

Experiment with different grind settings to achieve the brew that best suits your taste.



### Grinding for Espresso Coffee Machines

If you are using Dual Wall Filters, we suggest the coarser 11-20 setting. For Single Wall Filters, use the finer 17-25 setting in the ESPRESSO range.



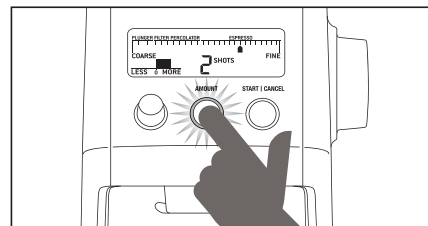
#### NOTE:

If the grind dial is tight, run grinder empty briefly by pressing the START/CANCEL button whilst turning the dial.

### STEP 2: Selecting your Grind Amount

Select the desired amount of grinds required by pressing the AMOUNT button.

To increase, keep pressing the AMOUNT button to the maximum number of shots or cups, as shown in the Coffee Chart below.



The amount dispensed will vary depending on the grind setting. The Catler Coffee Grinder will automatically adjust the dose for the grind selected.

#### NOTE:

You can increase the amount already selected during operation by pressing the AMOUNT button.

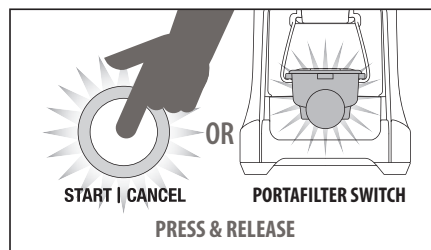
COFFEE TYPE	PLUNGER	DRIP FILTER	PERCOLATOR	ESPRESSO (DUAL WALL)	ESPRESSO (SINGLE WALL)
GRIND SIZE	COARSE	MEDIUM COARSE	MEDIUM	FINE	EXTRA FINE
GRIND SETTING	1-2	3-5	6-10	11-20	17-25
AMOUNT	1 UP TO 12 SHOTS	1 UP TO 12 SHOTS	1 UP TO 12 SHOTS	1 UP TO 8 SHOTS	1 UP TO 8 SHOTS

### STEP 3: Using Auto or Manual Grinding Mode

You can START and STOP the grinding operation in 2 ways.

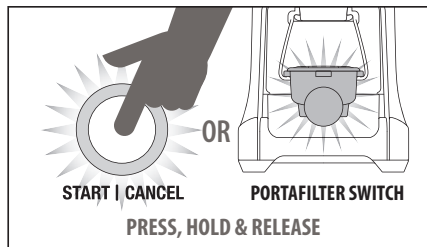
#### 1. Automatic Grinding (AUTO STOP)

- 'Press & Release' START/CANCEL button or PORTAFILTER SWITCH once to activate.
- Grinding will automatically stop when the selected grind amount is dispensed.



#### 2. Manual Grinding (MANUAL START/STOP)

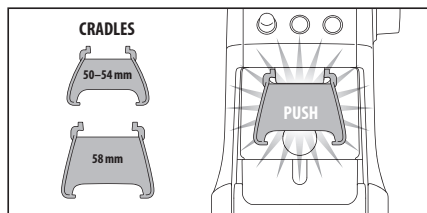
- 'Press & Hold' either START/CANCEL button or PORTAFILTER SWITCH for as long as you require. 'Release' START/CANCEL button or PORTAFILTER SWITCH and the grinding will stop.



### STEP 4: Grinding into your Portafilter, Grind Container or Drip Filter Basket

#### 1. Grinding into Portafilter

- Choose the cradle size that fits your portafilter (either small 50-54mm or large 58mm).
- Slide cradle into position under grind outlet.



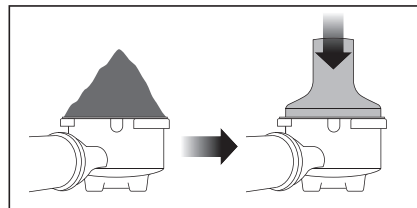
- Insert portafilter into cradle.
- Use Automatic or Manual grinding function to start operation using the START/CANCEL or PORTAFILTER SWITCH.
- Simply slide cradle out to remove.

#### NOTE:

You can grind direct into your portafilter even if it does not fit into the cradles supplied; without the cradle attached, press the 'PORTAFILTER SWITCH' with your finger or portafilter.

#### NOTE:

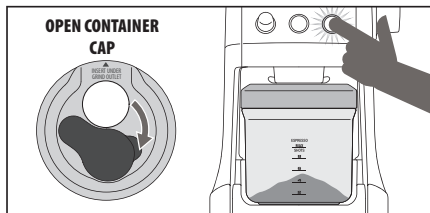
It is normal for the correct amount of coffee to appear overfilled in your portafilter. Untamped coffee is three times the volume of tamped coffee.



## 2. Grinding into Grind Container

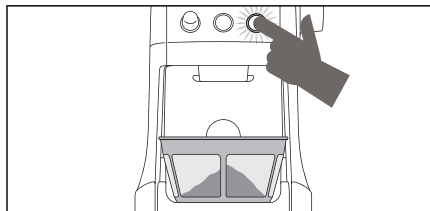
- Slide in grind container with cap open directly under grind outlet.
- Use Automatic or Manual grinding function to start operation using the START/CANCEL button on the control panel.

You can grind into grind container without the lid. However, we recommend keeping the lid on to prevent coffee grinds from escaping.



## 3. Grinding into Drip Filter Basket

- Place your drip filter basket under grind outlet.
- Use Automatic or Manual grinding function to start operation using the START/CANCEL button on the control panel.

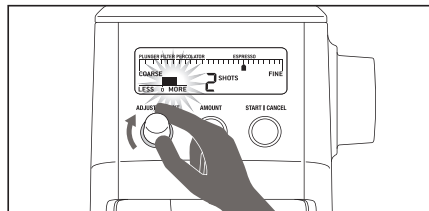


## Customising your grind amount

The ADJUST AMOUNT function gives you the ability to modify the preset amount to deliver more or less grinds into your portafilter or grind container.

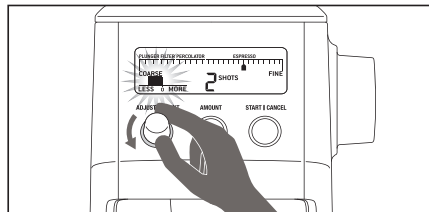
### Increasing the Grind Amount

To increase the grind amount selected, turn the ADJUST AMOUNT dial to the right. Each bar adjustment will increase the grind amount by 5%, up to a maximum of 25% more.



### Decreasing the Grind Amount

To decrease grind amount selected, turn the ADJUST AMOUNT dial to the left. Each bar adjustment will decrease the grind amount by 5%, up to a minimum of 25% less.



## Energy Saving Feature

The grinder will automatically switch off if not used after 5 minutes.

To reactivate the machine whilst in POWER SAVING/SLEEP MODE, press any button on the grinder control panel.

## HINTS & TIPS

These hints and tips will help you to improve the results of grinding coffee and preparation of your favorite beverages.

- Fresh grinds are the key to making coffee with more flavour and body.
- Coffee flavour and strength is a personal preference. Vary the type of coffee beans, amount of coffee and fineness of grind to achieve the flavour you prefer.
- Use freshly roasted coffee beans, preferably with a 'roasted on' date.
- Store coffee beans in a dark, cool and dry place. Vacuum seal if possible.
- Buy in small batches to reduce the storage time and store no more than one week's supply at any time.
- Once coffee is ground it quickly loses its flavour and aroma. For the best results grind beans immediately before brewing.
- Do not store beans in the bean hopper for a prolonged period.
- When storing appliance, run grinder empty to clear of ground beans left in chamber.
- Run grinder for 2 seconds before each use for maximum freshness.
- Clean the bean hopper and conical burrs regularly.

Care and Cleaning

## CARE AND CLEANING

1. Make sure the device has been switched off by pressing START/CANCEL button. The device is switched off if push-dial backlight has gone off. Unplug the power cord from the power outlet before cleaning.
2. Wash the grind container and lid, bean hopper and lid in warm soapy water, rinse and dry thoroughly.
3. Wipe and polish exterior of appliance with a soft damp cloth.

### NOTE:

Do not use alkaline or abrasive cleaning agents, steel wool or scouring pads, as these can damage the surface.

### NOTE:

We recommend you do not clean any grinder parts or accessories in the dishwasher.

### WARNING:

**NEVER IMMERSE THE POWER BASE, POWER CORD AND PLUG IN WATER OR ANY OTHER LIQUID. DO NOT EXPOSE THE DEVICE OR ANY ITS PART TO MOISTURE.**

### NOTE:

USE A SOFT CLOTH AND MILD DETERGENT TO CLEAN THE APPLIANCE.

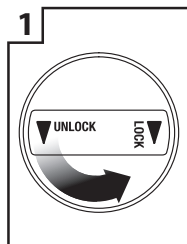
## Storage

1. Ensure the appliance is switched off, cleaned and dried before storing.
2. Ensure all accessories are clean and dry.
3. Wrap the power cord around the power cord storage under the power base.
4. Store the appliance upright position. Do not place anything on top.

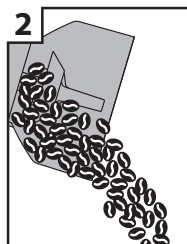


## Cleaning conical burrs

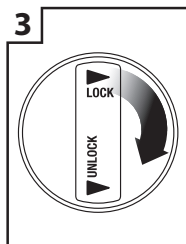
Regular cleaning helps the burrs achieve consistent grinding results which is especially important when grinding for espresso coffee.



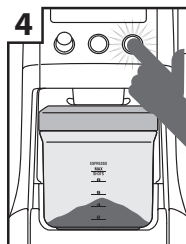
Unlock hopper.



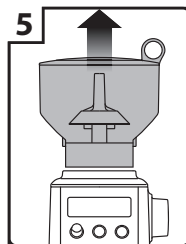
Remove beans.



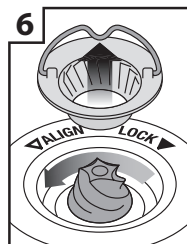
Lock hopper.



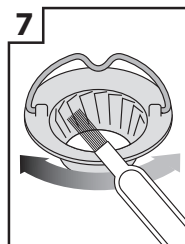
Run grinder until empty.



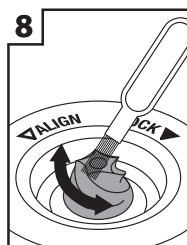
Remove hopper.



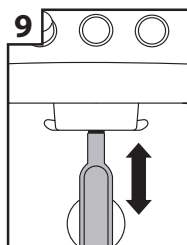
Remove upper burr.



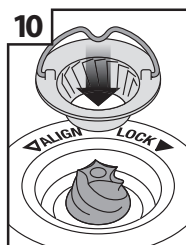
Clean upper burr with cleaning brush.



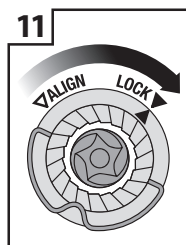
Clean lower burr with cleaning brush.



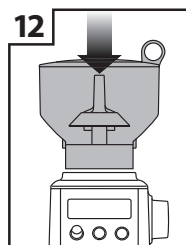
Clean grind outlet with brush.



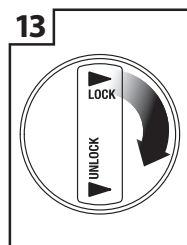
Push upper burr firmly into position.



Lock upper burr.



Align hopper into position.



Lock hopper.

## TROUBLESHOOTING

Problem	Possible Cause	What to Do
<b>Grinder does not start after pressing START/CANCEL button.</b>	<ul style="list-style-type: none"> <li>Grinder not plugged in!</li> <li>Grinder is overheated.</li> <li>Bean hopper not attached correctly. 'LOCK BEAN HOPPER' will be displayed on LCD screen.</li> </ul>	<ul style="list-style-type: none"> <li>Plug power cord into power outlet.</li> <li>Remove power plug from power outlet. Leave for 20 minutes to cool down before using again.</li> <li>Lock bean hopper into position.</li> </ul>
<b>Motor starts but no ground coffee coming from grind outlet.</b>	<ul style="list-style-type: none"> <li>Incorrect button press.</li> <li>No coffee beans in bean hopper!</li> <li>Grinder/bean hopper is blocked.</li> </ul>	<ul style="list-style-type: none"> <li>Press START/CANCEL or PORTAFILTER SWITCH to activate.</li> <li>Fill bean hopper with fresh coffee beans.</li> <li>Remove bean hopper. Inspect bean hopper &amp; grind heads for blockage. Replace parts and try again.</li> </ul>
<b>Motor starts but operates with a loud 'racket' noise.</b>	<ul style="list-style-type: none"> <li>Grinder is blocked with foreign item or chute is blocked.</li> <li>Moisture clogging grinder.</li> </ul>	<ul style="list-style-type: none"> <li>Remove bean hopper, inspect burrs &amp; remove any foreign body.</li> <li>Clean burr heads and chute (refer to Care &amp; Cleaning instructions).</li> <li>Leave burrs to dry thoroughly before re-assembling. It is possible to use a hair dryer to blow air into grinder inlet (lower burr) to dry.</li> </ul>
<b>Unable to lock bean hopper into position.</b>	<ul style="list-style-type: none"> <li>Coffee beans obstructing bean hopper locking device.</li> </ul>	<ul style="list-style-type: none"> <li>Remove bean hopper. Clear coffee beans from top of burrs. Re-lock bean hopper into position and try again.</li> </ul>
<b>Not enough/too much coffee grind.</b>	<ul style="list-style-type: none"> <li>Grind amount requires adjustment.</li> </ul>	<ul style="list-style-type: none"> <li>Press AMOUNT button to change grind amount.</li> <li>Use ADJUST AMOUNT dial to fine tune the amount 'More or Less'.</li> </ul>
<b>Portafilter overfills.</b>		<ul style="list-style-type: none"> <li>It is normal for the correct amount of coffee to appear overfilled in your portafilter. Untamped coffee is three times the volume of tamped coffee.</li> </ul>
<b>Emergency stop?</b>		<ul style="list-style-type: none"> <li>Press START/CANCEL button to stop operation.</li> <li>Unplug power cord from power outlet.</li> </ul>

## INSTRUCTIONS AND INFORMATION REGARDING THE DISPOSAL OF USED PACKAGING MATERIALS

Dispose of packaging material at a public waste disposal site.

### DISPOSAL OF USED ELECTRICAL AND ELECTRONIC APPLIANCES



The meaning of the symbol on the product, its accessory or packaging indicates that this product shall not be treated as household waste. Please, dispose of this product at your applicable collection point for the recycling of electrical & electronic equipment waste. Alternatively in some states of the European Union or other European states you may return your products to your local retailer when buying an equivalent new product. The correct disposal of this product will help save valuable natural resources and help in preventing the potential negative impact on the environment and human health, which could be caused as a result of improper liquidation of waste. Please ask your local authorities or the nearest waste collection centre for further details. The improper disposal of this type of waste may fall subject to national regulations for fines.

#### **For business entities in the European Union**

If you wish to dispose of an electrical or electronic device, request the necessary information from your seller or supplier.

#### **Disposal in other countries outside the European Union**

If you wish to dispose of this product, request the necessary information about the correct disposal method from local government departments or from your seller.



This product meets all the basic EU regulation requirements that relate to it.

Changes to the text, design and technical specifications may occur without prior notice and we reserve the right to make these changes.



Due to continued product improvement, the products illustrated/photographed in this brochure may vary slightly from the actual product.

# COFFEE GRINDER



**W W W . C A T L E R . E U**

CUSTOMER SERVICE

**I N F O @ C A T L E R . E U**