

cremesso

SWISS CAFE DESIGN



ENERGY
SAVE
CONCEPT



19
BAR



EASY
TO USE



15 SEC
READY TO USE

uma AUTOMATIC

Coffee experience engineered in Switzerland





2 Various

For your safety

- First read this entire operating manual, and keep it in a safe place for other users
- To avoid damage, only use genuine cremesso capsules with this machine
- Intended use: This appliance may only be used as described in this manual. Using it for other purposes is abusive and dangerous
- Danger of electric shock! Never immerse the machine in water or any other liquid
- Connect only to a properly grounded power point (220-240 V) protected by at least a 10 A fuse. To make sure that the machine is switched off, remove the plug from the power point
- Always pull out the power plug before:
 - relocating the machine
 - cleaning or maintenance
 - long periods of disuse
- Never clamp or run the power cable over sharp corners or edges: Danger of electric shock!
- Damaged power cables may only be replaced at the customer service centre: Danger of electric shock!
- Never touch the power plug/socket/cable or the machine with damp or wet hands. Never unplug by pulling the power cable; always pull out the plug
- If you need an extension cable, make sure it is suitable for your machine (3-pole grounded, and at least 1.5 mm² conductor cross-section), and lay the cable to avoid tripping
- We recommend connecting the machine via an FI circuit breaker. Consult a specialist if in doubt
- Danger of scalding! Never move the machine during operation!
- Never operate the machine without water
- A permanent water supply connection is not allowed
- Danger of burning! Never touch very hot parts of the machine (e.g. brew unit during operation)
- Danger of scalding! Do not touch the steam or water jets
- Danger of scalding! Never start the machine when the operating lever is open
- Danger of scalding! Do not move the operating lever when the machine is still under pressure making tea or coffee
- Do not insert fingers or hands under the operating lever: Danger of crushing!
- Do not insert fingers in the capsule holder. Danger of burning/cutting!





– ***Do not use the machine in case of:***

- faulty operation
 - damaged power cable
 - after falling or other damage
 - In such cases immediately have the machine checked and repaired if necessary at the customer service centre
- The machine location must meet the following requirements:
- Place on a dry, stable and level surface that is waterproof and heat-proof
 - At least 60 cm (2 feet) away from sink and taps
 - Make sure children cannot play or tamper with the machine
 - Only use in dry rooms

– ***Never place the machine:***

- directly on marble surfaces, untreated or oiled woodwork (risk of non-removable coffee or descaler stains; no claims will be entertained in such cases)
- directly beneath a power socket
- on flammable or meltable objects or surfaces
- on hot surfaces or nearer than 50 cm to open flames (same applies to the power cable!)
- under any covering
- To prevent frost damage, do not store the machine at temperatures below 5 °C (e.g. in caravans)

- Pull out the power plug and allow the machine to cool down completely before cleaning and/or maintenance
- Only use cleaning and descaling agents recommended by the manufacturer
- Descaling fluid can be a health hazard. Avoid contact with eyes, skin and other surfaces
- To prevent damage, never use replacement parts or accessories not recommended by the manufacturer.
- Persons, including children, who in view of the level of their physical, sensory or mental capacities, or their lack of experience or knowledge, are not in a position to use the equipment with safety, may not use this machine without supervision or instruction by a responsible person.
- Children more than 8 years old may use this appliance but only under supervision or after instruction and fully understanding the associated risks and dangers.
- Young children must not be allowed to play with this appliance because they do not understand the risks involved
- This appliance is only for household use



4 Welcome to the world of cremesso

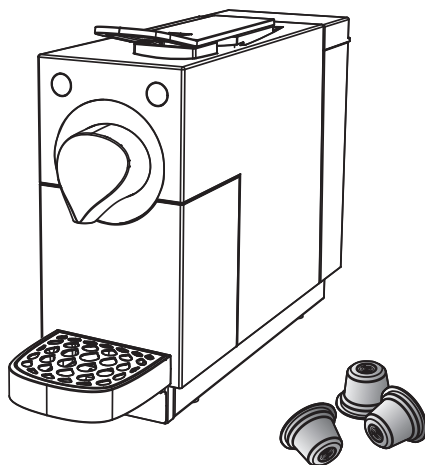
cremesso

SWISS CAFE DESIGN

Congratulations on choosing the **cremesso** system! It will give you the greatest pleasure – capsule by capsule. In a few seconds your **cremesso UNA** will conjure up all kinds of perfectly prepared beverages: the first-class **cremesso** coffee and tea selection meets even your most discriminating demands.

We thank you for your confidence in **cremesso**, and wish you many years of enjoyment.

At www.cremesso.com you can download this manual in PDF format and get the latest information on the **DELIZIO** capsule system.

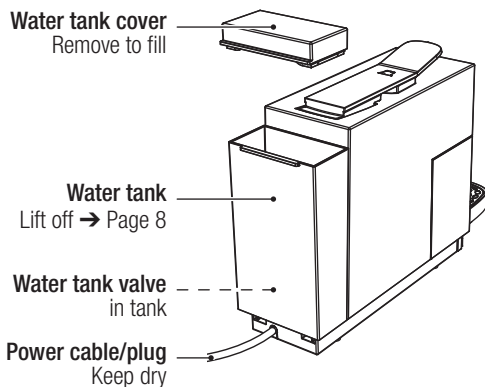
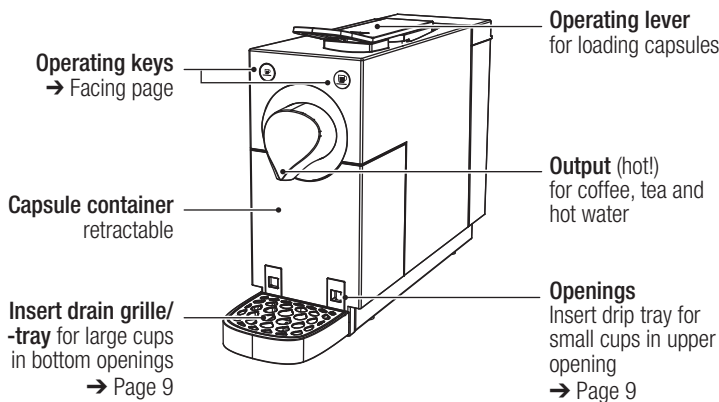




Contents

– Safety precautions	2
– Overview of machine parts and controls	6
– Key displays	7
– Starting up	8
– Preparation / installation / water filling / power connection / deaerating	8
– Making coffee or tea	10
– After making coffee or tea	12
– Capsule ejection	12
– Emptying the capsule container/drip tray: daily	13
– Emptying the water tank: daily	13
– Special functions	14
– Programming the amount of coffee / Energy-saving mode	14
– Cleaning/maintenance	16
– Rinse out and deaerating the machine and internal piping	16
– Cleaning the machine and parts	16
– Decalcification: after 300 coffee/tea cups or 1–2 months	18
– Always steam out before storage or transport	20
– Various	22
– Troubleshooting guide	22
– Disposal /technical data	23

6 Overview of machine parts and controls





The keys light up differently according to operating mode:



- White** (slow flickering):
 - Energy-saving mode, press key → Page 14
- White** (continuous):
 - Coffee/tea output → Page 10
- White** (flashing):
 - Machine heating up → Page 10
- White** (flashing rapidly):
 - Programme the amount of coffee → Page 14



- White** (continuous):
 - Coffee/tea output → Page 10
- White** (flashing):
 - Machine heating up → Page 10
- White** (flashing rapidly):
 - Programme the amount of coffee → Page 14

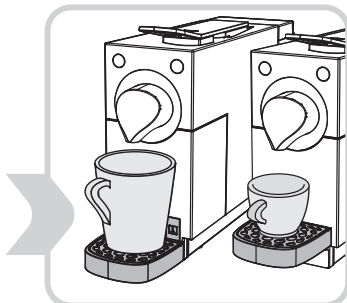


(both keys)

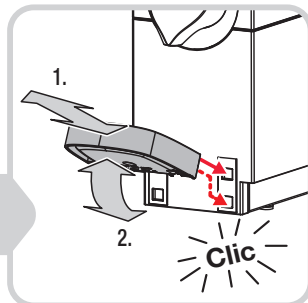
- White** (continuous):
 - Ready for coffee/tea output
- Dark** (both keys):
 - Machine switched off or power plug not inserted → press any key → Page 14
- White** (flashing slowly):
 - Steaming-out in progress → Page 20
- White** (flashing rapidly):
 - Electronics fault or temperature error (temperature too high or below 5 °C); pull out power plug and wait 30 minutes before replacing. If rapid flashing continues → contact service centre (30 minutes warming up time from low temperatures should be enough to restore normal operation)

8 Starting up

Preparation / installation / water filling / power connection / deaerating

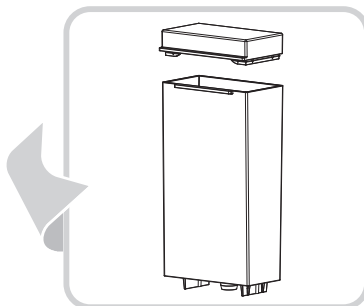


Cup size: Insert drip tray in top or bottom opening, depending on cup size:

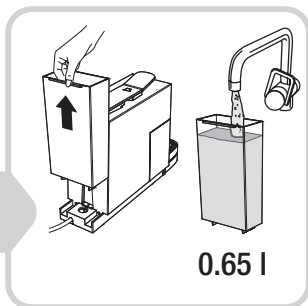


1. Insert tray obliquely into top or bottom opening, **2.** Press down (clicks in place).

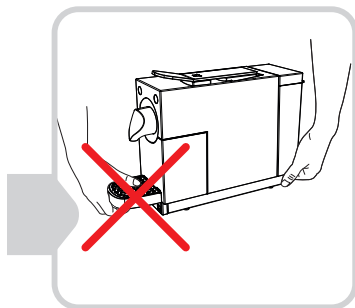
Remove tray in opposite order



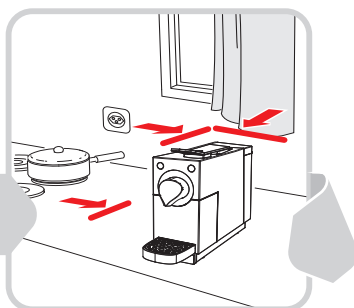
Clean the water tank with luke-warm water and household detergent, rinse and allow to dry thoroughly



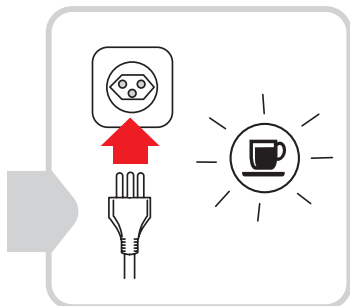
Fill tank with cold water (max. 0.65 litres). Change water daily



Carry/Transport: Never hold the machine on the drip tray (risk of dropping machine)!



Install on a dry, stable, waterproof and heatproof surface. Not directly on marble or wood (risk of coffee or descaler stains)



Insert power plug in an earthed socket.

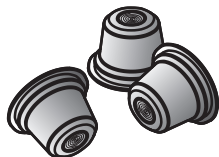
The right-hand **key** ☺ flickers slowly to indicate energy-saving mode → page 14



Deaerate and rinse the internal piping: Place a large cup under the output and **press key** ☺ or ☹. Afterwards empty the cup and press key ☺ or ☹

10 Making coffee or tea

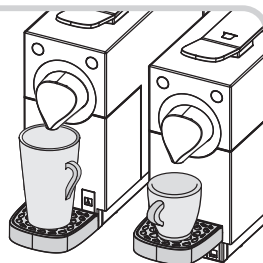
Your first coffee or tea!



cremesso

Use one **cremesso** capsule for each cup. No other types of capsule can be used. After long pauses, deaerate the piping → page 16.

This machine is only for private use



Cup: place under the outlet. Insert drip tray in top or bottom opening depending on cup size → page 9



Good to know

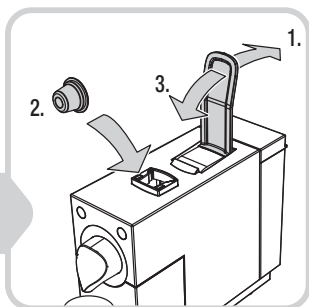
The output key first flashes white to indicate heating up. Output starts when it stays white.

Tip: Use thick preheated cups for ristretto and espresso to keep your coffee warm.

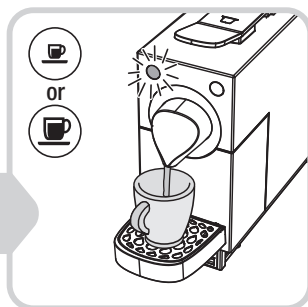
Preheat the cup: Press espresso (☞) (without capsule).

Deaerate the piping: After long pauses (e.g. vacations) they contain air (→ page 16 «Rinse and deaerate machine/piping»).

Before changing between coffee and tea: Press key (☞) or (☞) without a capsule to rinse the piping (→ page 16 «Rinse and deaerate machine/piping»)



Load capsule: 1. Push the operating lever right back. 2. Drop the capsule straight into the opening. 3. Pull the operating lever right forward to penetrate the capsule



Coffee/tea output: Choose a small ☺ or big cup ☹ (key flashes). Output stops automatically when cup is full (or press the key again to stop earlier). Eject the capsule afterwards → page 12

Output quantity on first startup (= works setting):

- ☺ Espresso 50 ml (= «small» cup)
- ☹ Lungo/tea 110 ml (= «large» cup)

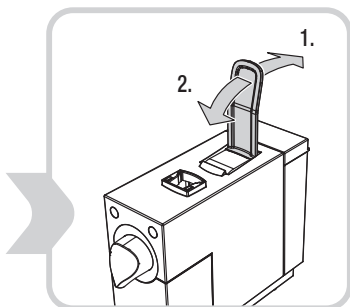
You can adjust the output quantity to your preferences (→ page 14 «Programming the coffee quantity»).

Note:

- Beware of scalding by hot coffee or tea
- The operating lever must be closed for coffee/tea output

12 After making coffee/tea

Eject the capsule



Eject the capsule: 1. Push operating lever right back to eject empty capsule. 2. Pull operating lever right forward



Good to know

Capsule: The capsule may stick in the opening if it has been there a long time. If so, open and close the operating lever. If the capsule is still blocked, push down lightly with a finger (caution: hot sharp opening point inside!). After opening the **operating lever**, water may drain into the tank. This is normal and not a fault.

Hygiene: Empty the water tank daily. Empty the used capsule container, drainage tank and drip tray after about 10 beverages or at least once daily to prevent overflow.

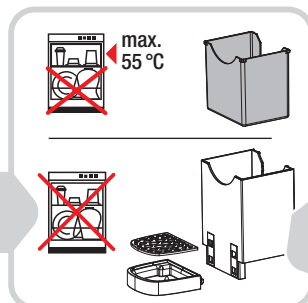
Important: Never clean in the dishwasher (except the used capsule container)



Daily: Empty the capsule container, drip tray and water tank

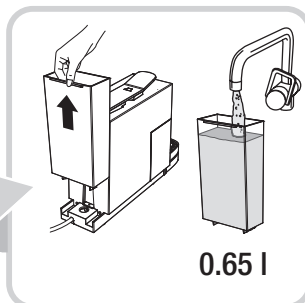


Hold the **drip tray** firmly and pull it forward

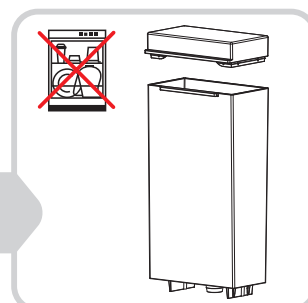


Remove the **capsule container** (snaplock), **drip grille** and **upper drip tray**.

After cleaning reassemble in the opposite order



Daily: empty the water tank and fill with cold water (max. 0.65 litres)

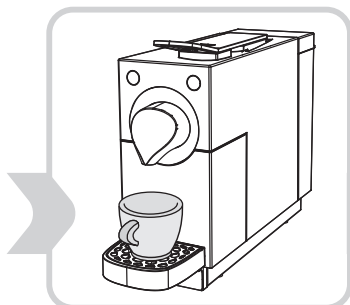


Clean the water tank and cover with luke-warm water and household detergent.

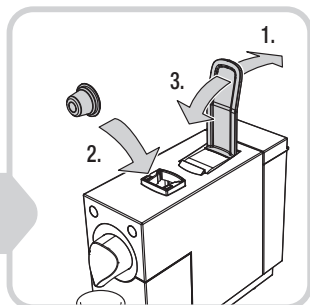
Never clean in the dishwasher!

14 Special functions

Programming the coffee quantity

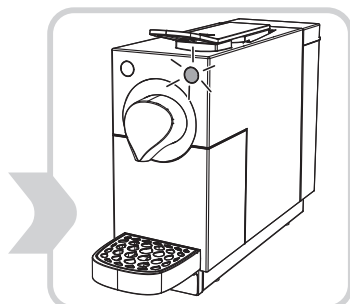


Programming: Place a cup under the output




Load capsule: 1. Push the operating lever right back.
2. Drop capsule straight into the opening. 3. Pull operating lever right forward

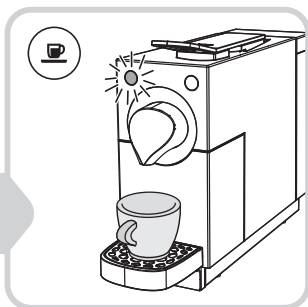
Energy-saving mode



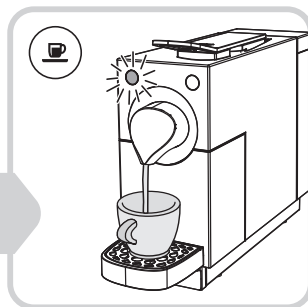
Energy-saving mode activated: key  flickers slowly



Stop energy-saving mode: press one of the keys (keys  and  flash white)



Hold down the key to be programmed, e.g. ☺ (min. 3 seconds) until it starts flashing rapidly, and then flickers slowly (= heating up)



Coffee output starts. When your cup is full enough **press the key again** – output stops and both keys light up again



Good to know

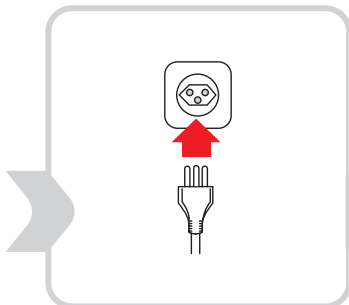
Energy-saving mode is automatically activated if no key is pressed for 60 seconds (key ☹ slowly flickers light/dark).

Switch the machine off: after another 5 minutes the machine shuts off automatically (key ☹ extinguishes). The machine can be immediately switched off manually by pressing keys ☺ and ☹ simultaneously for 3 seconds. To shut it off permanently (e.g. during vacations), pull out the power plug.

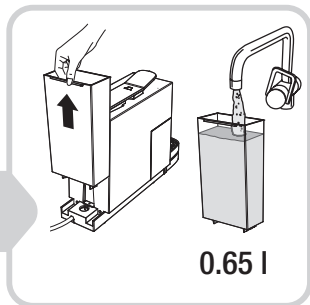
To end energy-saving mode (= activate the machine): press any key (keys ☺ and ☹ flash white again).

16 Cleaning and maintenance

Rinse and deaerate the machine and piping



Prior to startup or after a long period of disuse (e.g. vacations), rinse and deaerate the machine and piping



Fill the water tank with cold water (max. 0.65 litres)

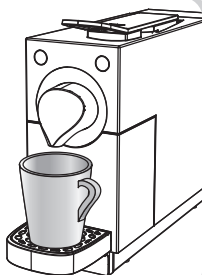
Cleaning the machine and parts




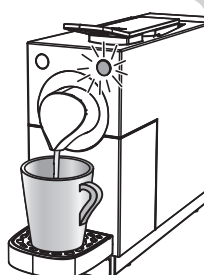
Always pull out the power plug first. Never immerse the machine or wash under running water




Clean the machine and output with a damp cloth. **Never rub dry or use abrasive detergents**

**Place a cup under the output.**

Do not insert a capsule. If key  flickers slowly, press any key



Press key  to start rinsing/deaerating. When the pump stops after a few seconds, rinsing/deaerating is finished

**Good to know**

Always keep the power cable and plug dry.

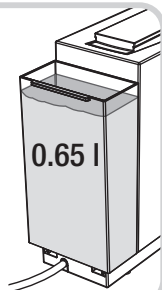
18 Cleaning and maintenance

Decalcify: after 300 cups of tea/coffee or 1-2 months



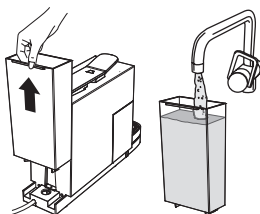
300 cups /
1-2 months

To prevent damage, **decalcify** the machine **no later than after 300 cups of coffee/tea or 1 to 2 months**



Mix cremesso decalcifier with water and fill the tank (0.65 litres; mixture as shown on label).

Never use vinegar (damages the machine)!



0.65 l

Tank empty: Rinse the tank well, fill with water, and replace. Empty the decalcifier fluid bowl and replace it under the outlet



Keep pressing the ☕-key until the tank is empty. **Fill the tank** and press ☕. Order **1 coffee without capsule**



Do not insert a capsule. Remove the cup tray and place a **large bowl** under the outlet (capacity at least 1 litre)



Press the ☰ key. After output leave the decalcifier in the machine for at least 3 minutes. Repeat until the tank is empty



Good to know

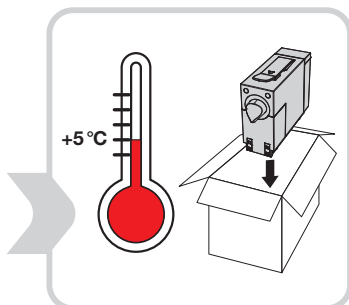
In some regions **drinking water is very hard** and leaves lime residues in the machine that can block the piping or cause other damage.

Decalcify the machine after 300 cups of coffee/tea, in case of water output blockage, or after 1 to 2 months. Decalcify more often in case of very hard water.

Follow the decalcifying instructions carefully to avoid damaging the machine. Special decalcifiers with colour coding must be used according to the manufacturer's instructions.

Important: Decalcifying takes about 30 minutes.

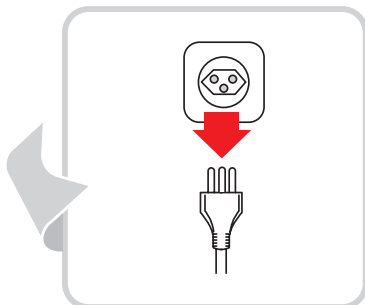
Always steam out prior to storage or transport



To **avoid damage during storage or transport**, first steam out the machine (to remove all water). This is essential at temperatures below 5 °C



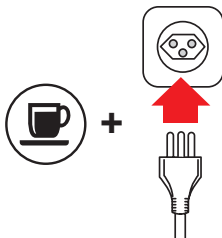
Pull out the power plug. Empty the water tank and replace it. Place a cup under the outlet




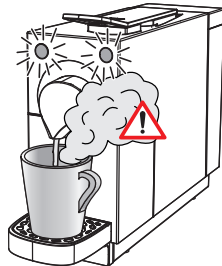
Pull out the power plug. Store the machine in a dry, dust-free place, out of reach of children



Tip: Use the original packaging



Hold down the **Lungo/Tea** key  and insert the power plug. Steaming out starts, and you can release the key



Beware of hot steam: danger of scalding! After a few seconds you will hear the pump. As soon as it stops, the key lights go out and decalcification is finished





Good to know

Always be sure to steam out the machine before long periods of disuse or storage/transport temperatures below 5 °C.

This removes all water from the system to prevent frost damage.

Flush out the machine and piping before using again (→ page 16).

At temperatures below 5 °C the machine cannot be started; keys  and  flash rapidly (→ page 7).

Troubleshooting guide



Repairs to your machine may only be carried out at the Service centre.

Unprofessional repairs and use of non-original replacement parts can be dangerous for the user. In case of unprofessional repairs, no liability will be accepted for resultant damage and the guarantee is invalidated.

If this troubleshooting guide does not help you solve your problem, please contact your local sales point.

Important: pull out the power plug immediately in case of faults, defects or possible damage to the machine after a fall.

Faulty coffee output

No coffee/tea output, or insufficient output

- Fill water tank and insert fully
- Defective capsule → insert a new one
- Close the operating lever as far as it will go
- Decalcify the machine (→ page 18)
- Pump defective → contact service centre

Pump sounds very loud

- Water tank empty → fill and/or insert fully

Water drips continuously from the outlet

- Decalcify the machine (→ page 18)

Occasional drips from the outlet

- Eject used capsule

Coffee/tea tastes sour

- Inadequate flushing after decalcifying
- Coffee "good until" date expired → use a new capsule

Cup filling not as programmed

- Water tank empty → fill and/or insert fully
- Re-programme (→ page 16)
- Decalcify the machine (→ page 18)

No water sucked in after tank was empty

- Used capsule in machine → Eject → Flush out piping (→ page 16)
- Try again without capsule in 30 minutes. Decalcify machine if water is sucked in
- After 30 minutes try again without a capsule. If still no water sucked in → contact service centre

Both keys flash rapidly

- Electronics or temperature error (→ page 7)



Disposal



- Dispose of used cremesso coffee and tea capsules according to the regulations in your country



- Worn-out machines should be returned to your dealer for professional disposal free of charge
- Machines with dangerous defects must be disposed of immediately to make sure that they can no longer be used
- For environment protection reasons, never dispose of old or defective machines with household garbage

Technical data

- | | | |
|-----------------------|---|---|
| – Rated voltage | 220-240 V 50 Hz
(Israel: 230 V / 50 Hz,
Korea: 220 V / 60 Hz) | – Weight (without water) approx. 3.25 kg |
| – Rated power | 1455 Watt (Korea 1310 W) | – Water tank capacity max. 0.65 litres |
| – Energy-saving mode | 0.3 W | – Radio interference suppression according to EU standards |
| – Dimensions (WxHxD): | ca. 106 x 255 x 371 mm | – Compliance CE, GS, RoHS, WEEE
(Korea also KC; Russland also PCT) |

In the interest of technical progress, design and/or execution changes to this appliance are reserved.



cremesso
SWISS CAFE DESIGN



www.cremesso.com

V3 38/12

