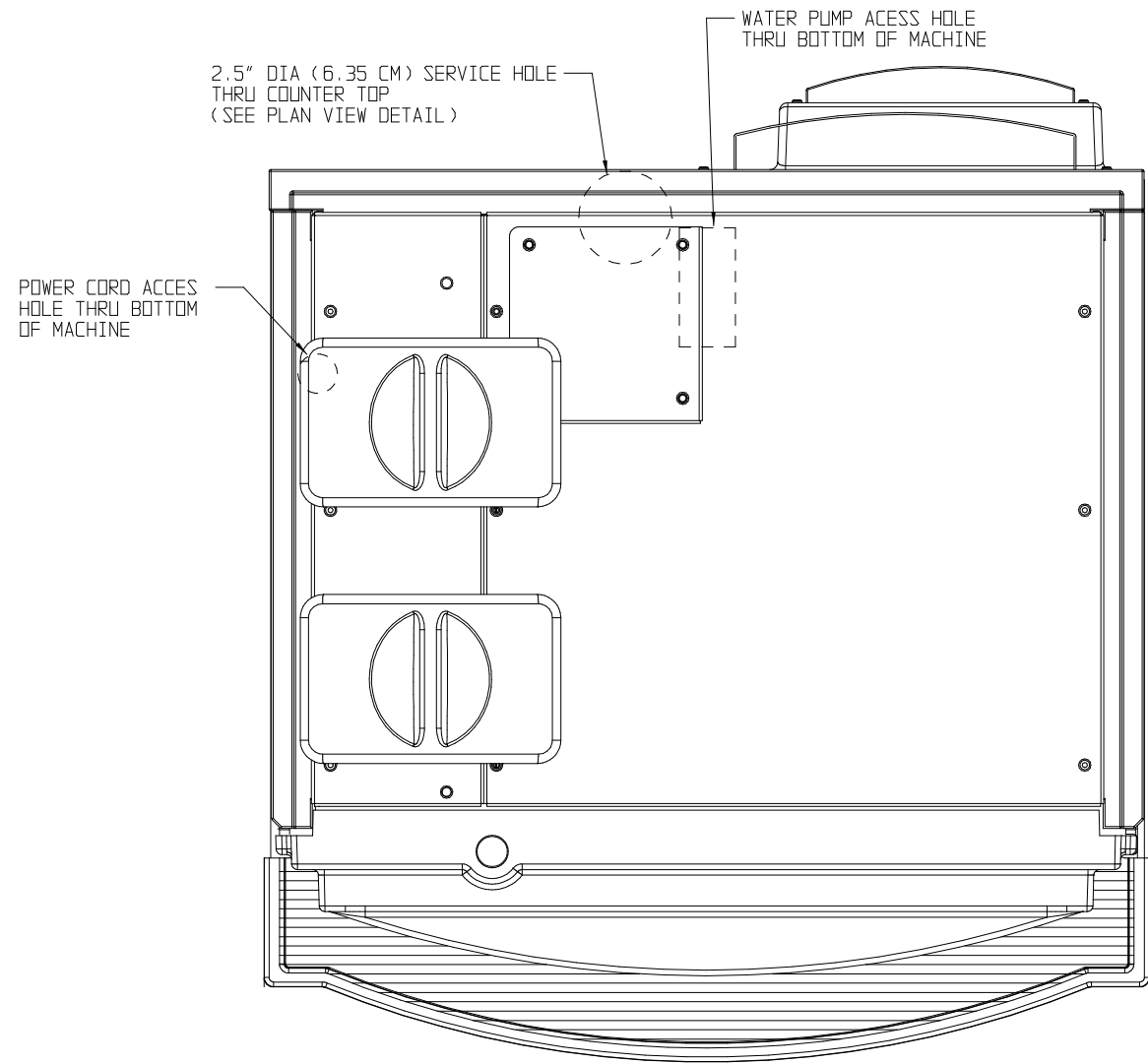


ACORTO, INC  
1287 120TH AVE N.E.  
BELLEVUE, WA 98005

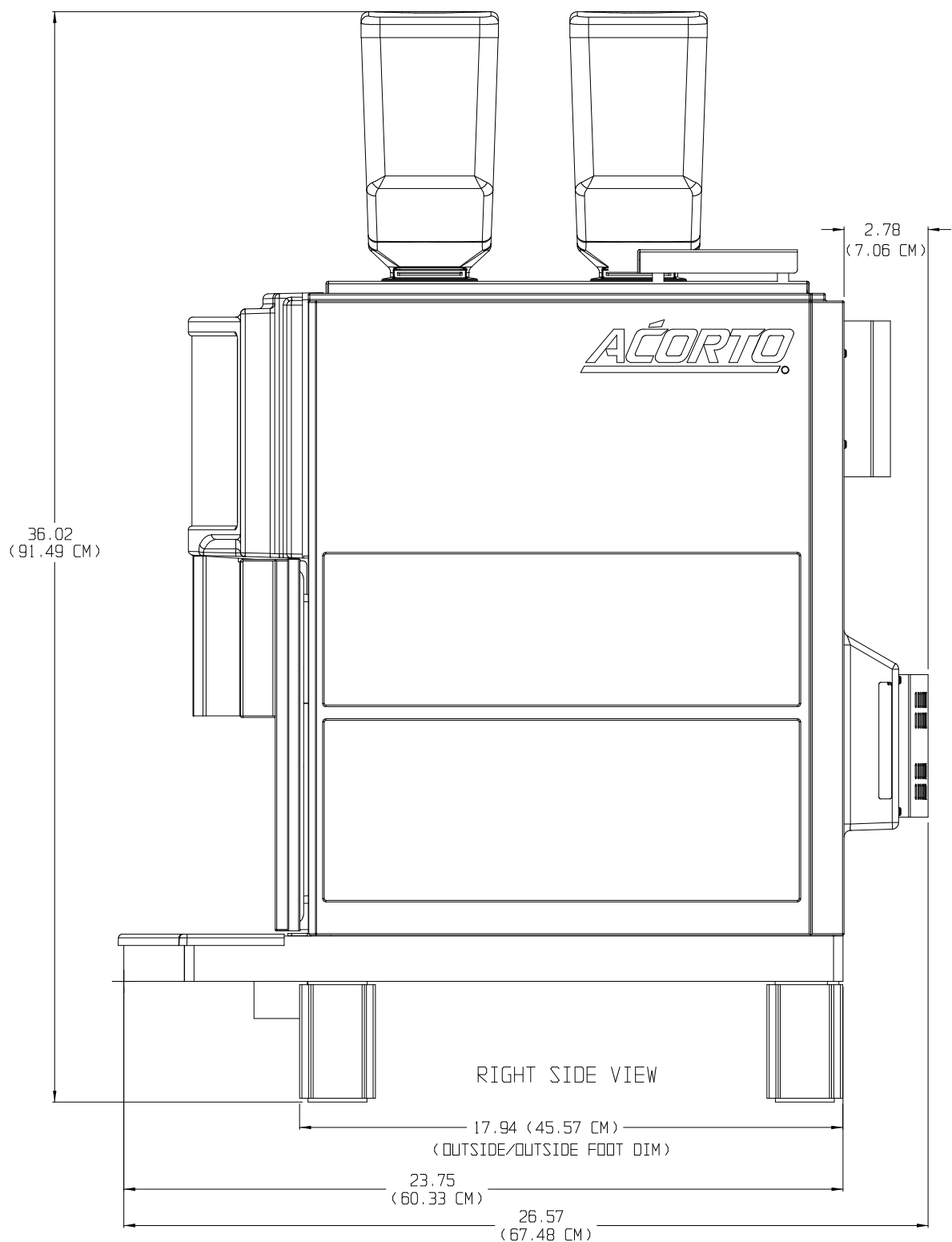
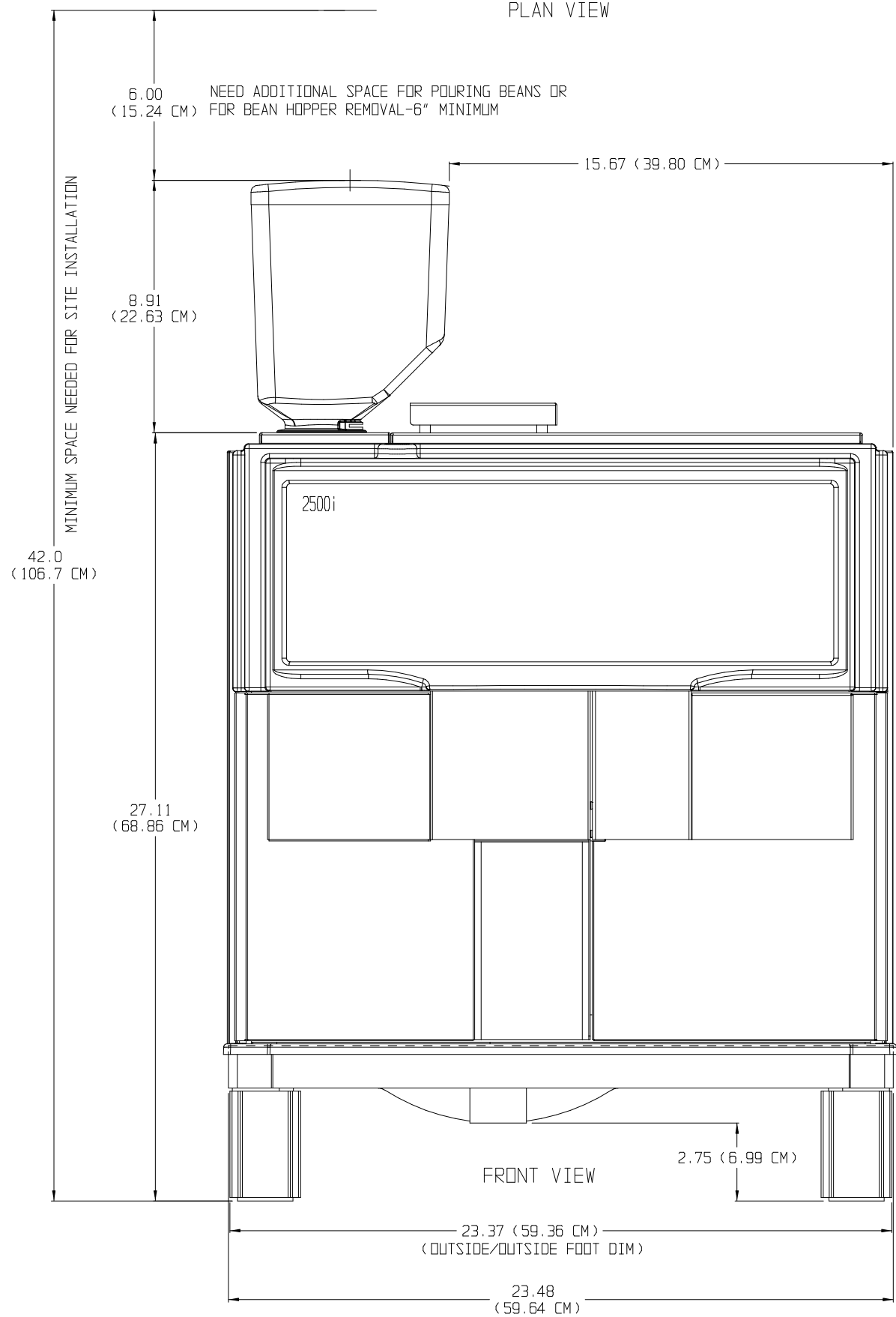
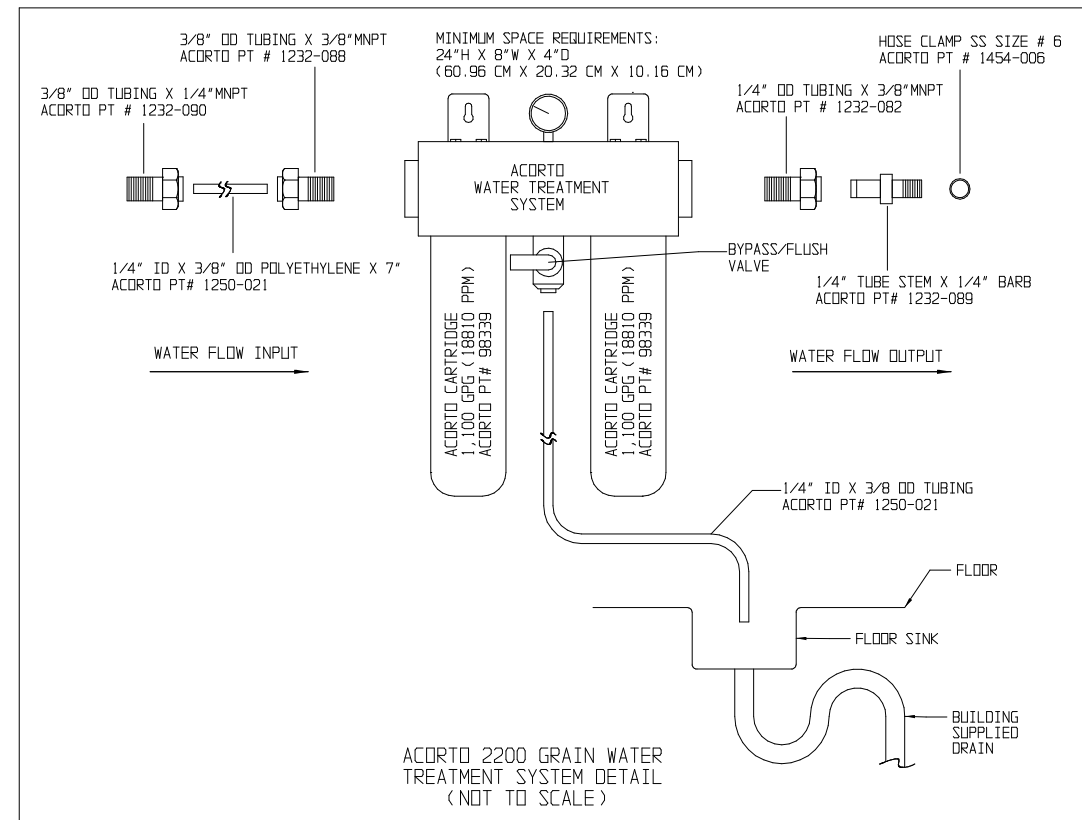
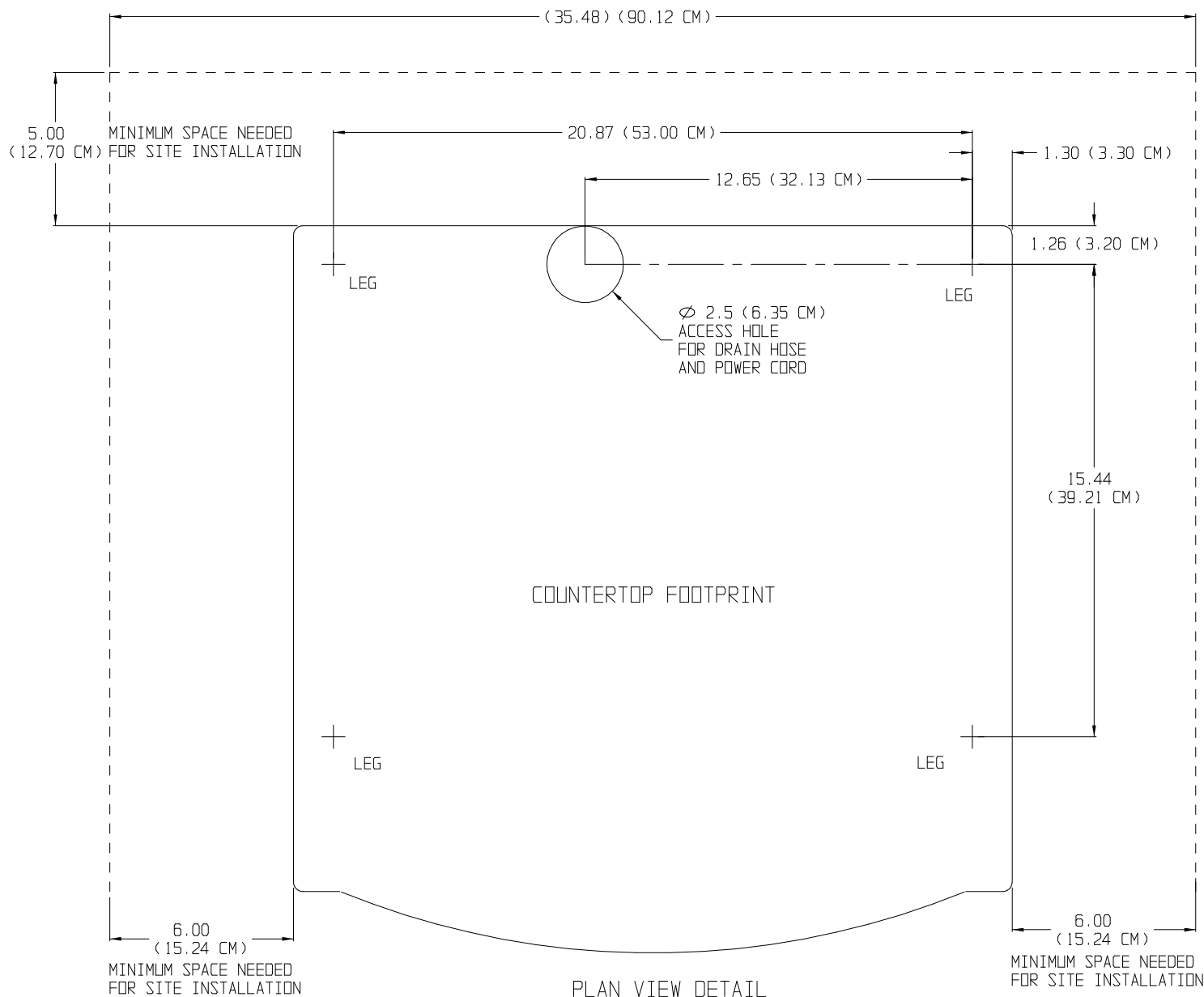
TEL 425 453-2800  
FAX 425 453-2167

DWG NUMBER: 6070-009A  
DESCRIPTION: 2500I INSTALL  
REQUIREMENTS  
SCALE: 1:1  
DATE: 5/09/03

DO NOT SCALE DRAWING



PLAN VIEW



PHYSICAL SITE REQUIREMENTS: FOR THE MODEL 2500I

COUNTERTOP SPACE: 35.48" W X 28.75 D X 42.00" H COUNTER MUST BE ABLE TO SUPPORT 245 LBS MINIMUM.

POWER REQUIREMENTS: 208/220, 1 PHASE VAC, 30 AMP DEDICATED CIRCUIT UTILIZING A NEMA L14-30 RECEPTACLE (WALL PLUG) (OR) 208 3 PHASE 20 AMP DEDICATED CIRCUIT UTILIZING A NEMA L15-30 RECEPTACLE (WALL PLUG) ELECTRICAL RECEPTACLE MUST BE LOCATED WITHIN 5 FEET OF MACHINE.

PLUMBING REQUIREMENTS: THE SITE MUST HAVE A MINIMUM OF 30 PSI (2.07 BARS) AND A MAXIMUM OF 100 PSI (6.89 BARS) WATER SUPPLY PRESSURE TO THE MACHINE, WITH A RATE OF FLOW OF 25 GPH.

THE WATER SUPPLY MUST BE A DEDICATED 1/4" (OUTSIDE DIA.) SUPPLY LINE WITH AN IN-LINE SHUTOFF VALVE INSTALLED ON THE SUPPLY SIDE OF THE WATER TREATMENT SYSTEM.

STEAM TANK CAPACITY: 1.6 GALLONS/6.06 LITERS  
WATER TANK CAPACITY: .70 GALLONS/2.65 LITERS

WATER TREATMENT SYSTEM: (REQUIRED FOR THE US)  
ALL DOMESTIC MACHINES ARE SHIPPED WITH AN ACORTO 2200 GRAIN WATER TREATMENT SYSTEM, WHICH INCLUDES A CARBON FILTER CARTRIDGE AND WATER SOFTENER CARTRIDGE. SPACE REQUIREMENTS: 24"H X 8"W X 4"D. SYSTEM MUST BE LOCATED WITHIN 5 FEET OF MACHINE.

DRAIN SYSTEM REQUIREMENTS:  
IT IS IMPORTANT THAT THE DRAIN HOSE HAS A CONTINUOUS RATE OF FALL. MINIMUM RATE OF FALL REQUIRED IS ONE INCH PER FOOT. INDIRECT DRAIN REQUIRED

