






TASSIMO



TAS 40xx



BOSCH

-  Gebrauchsanleitung
-  User manual
-  Notice d'utilisation
-  Istruzioni per l'uso
-  Instrucciones de uso



■ Please read this instruction manual and the short instructions carefully and keep for future reference.

Thank you for choosing a TASSIMO machine. With TASSIMO, you can enjoy your favourite drink at any time. Aromatic coffee, strong espresso, tasty caffè crema, creamy cappuccino or latte macchiato, or even a cup of tea or hot chocolate: they're all waiting for you at the push of a button.

Your TASSIMO machine works exclusively with specially developed capsules known as TASSIMO T DISCS. When you insert the T DISC, the machine automatically reads the bar code printed on the label. This contains exact details of the amount of water needed, as well as the brewing time and temperature required to prepare the chosen beverage. T DISCS are specially designed for use with the TASSIMO brewing system and offer perfect enjoyment, cup after cup. To ensure long-term enjoyment, please only use the T DISCS specially developed for the TASSIMO machine.

Safety instructions

Risk of electric shock!






- **This appliance is designed for domestic and not commercial use.**
- Connect and operate the appliance only in accordance with the specifications on the rating label situated on the base of the machine.
- Do not use your TASSIMO machine if either the power cord or appliance is damaged.
- Use indoors at room temperature only.
- Do not let children or persons with reduced mental or sensory abilities or limited knowledge and experience use the appliance, unless they are supervised or have been instructed in the use of the appliance by a person who is responsible for their safety.
- Supervise children to ensure that they do not play with the appliance.
- In the event of malfunction, unplug the appliance immediately.
- To avoid potential hazards, repairs such as replacing a damaged cord should only be performed by our service personnel.
- Never immerse the appliance or power cord in water.

Risk of scalding

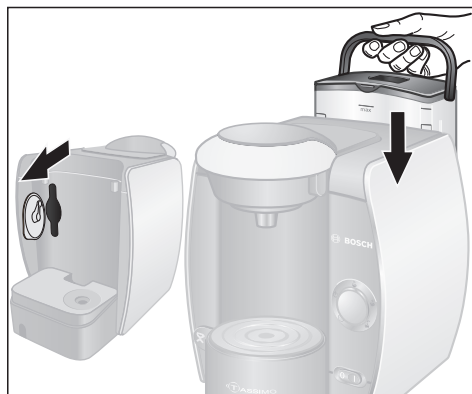
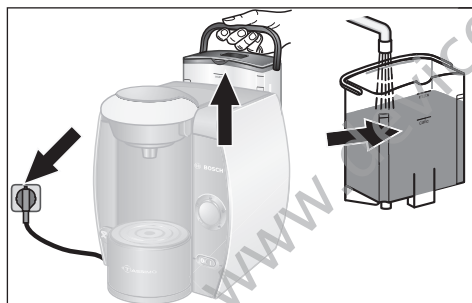
- **Wait until the orange light lights up before opening the brewing unit.**
- Never open the brewing unit during the brewing process.
- Please note that the beverages are very hot when dispensed.

Your TASSIMO machine at a glance

Before reading further, please open the folded diagram page at the start of the manual out to the left.

- 1 Cord storage compartment
- 2 On/off switch
- 3 Removable water tank
 - a Lid for water tank
 - b Float
- 4 Cup stand
 - a Drip tray
 - b Cup shelf
 - c Height adjustment
- 5 Start/stop button
- 6 Indicator lights
 - a Stand-by 
 - b Automatic 
 - c Manual 
 - d Fill tank 
 - e Descale 
- 7 Clamp
- 8 Brewing unit
 - a T DISC holder
 - b Piercing unit
 - c Drink outlet
 - d Bar code reading window
- 9 Storage compartment for Service T DISC and cleaning / descaling programme short instructions
- 10 Service T DISC (For first use, cleaning and descaling)
- 11 Cleaning / descaling programme short instructions

We recommend that you store the Service T DISC and the cleaning / descaling programme short instructions in the compartment provided at the **back** of the appliance.



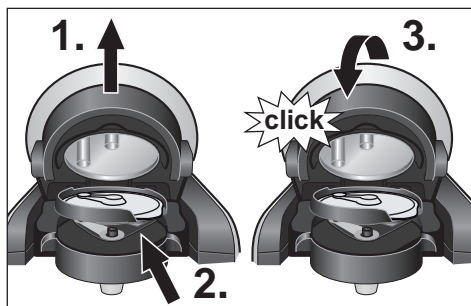
First use of your TASSIMO machine

Before using your TASSIMO machine for the first time, please proceed as follows:

- Pull a suitable length of the power cord out of the storage compartment and plug it into the electrical socket.
- Remove and rinse the water tank thoroughly under running water, and fill it with cool fresh water up to the MAX mark.
- Remove the Service T DISC from its compartment at the back of the appliance.
- Now replace the water tank and push it firmly down into place.



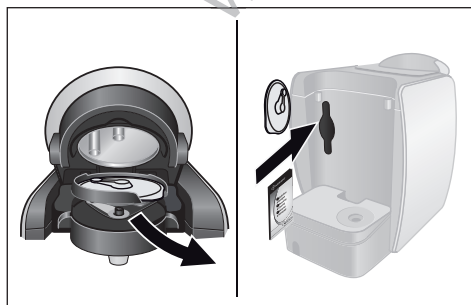
- Turn the on/off switch on (I).
All display items will light up briefly and then ⏻ Stand-by stays lit.
- Select a large cup (min. 200 ml) and place it on the cup shelf.



- 1. Open the brewing unit by lifting the lid.
- 2. Place the Service T DISC on the T DISC holder with the barcode facing down. Make sure that the flap of the T DISC is secured in the slot to the right.
- 3. Now close the brewing unit by pushing the lid down firmly until it audibly clicks into place.
- 4. Press the start/stop button. The cleaning process starts and dispenses water into the cup.
- 5. When the process is complete, empty the cup and put it back on the cup stand.



Important:
Repeat steps 4 - 5 another 4 times.



- Open the brewing unit, remove the Service T DISC and store it in the compartment at the back of the machine.


Your TASSIMO machine is now ready for use.

Controls and displays



Controls

Power switch

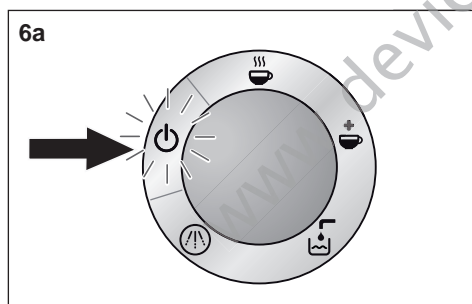
The on/off switch turns your TASSIMO machine on  and off. When it is switched on, all 5 display items light up briefly. The stand-by light will then remain on until the appliance is in use.

Note: To save energy, the appliance should be switched off after each use.




Start/stop button

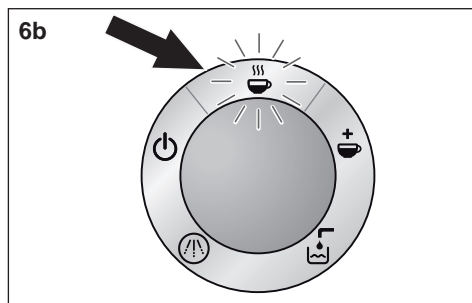
Once the T DISC of your choice is properly secured in your TASSIMO machine, you may start brewing it by pressing the start/stop button. Press again to stop the brewing process early, in order to adjust the drink to your individual taste.





Display items

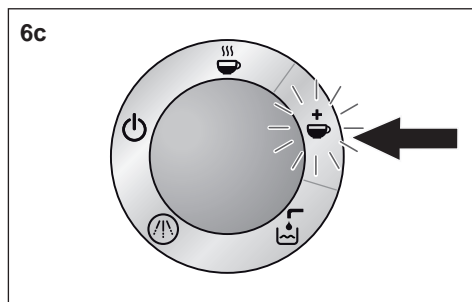
6a Stand-by

 Stand-by icon lights up (orange) when the power switch is switched on. You can now open the brewing unit and remove the T DISC or insert a new one.



6b Automatic

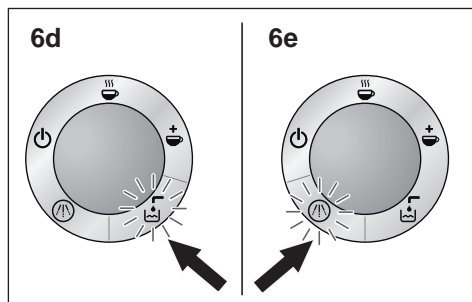
 Automatic icon lights up (green) when your TASSIMO machine is ready for use.
 Automatic icon will flash during a brew cycle after the start/stop button is pressed. Never open the brewing unit during the brewing process.



6c Manual ☕

☕ Manual icon lights up (green) when the brewing process is almost complete. If you press and hold the start/stop button within 20 seconds of the manual icon lighting up, you can extend the brewing process in order to adjust the strength of your drink. Using this manual operation will result in a milder tasting drink.

☕ Manual icon flashes during this time. Never open the brewing unit during the brewing process.



6d Fill tank 🚰

🚰 Fill tank icon flashes (red) when the removable water tank needs to be refilled. Remove, fill the water tank and replace it on your TASSIMO machine.

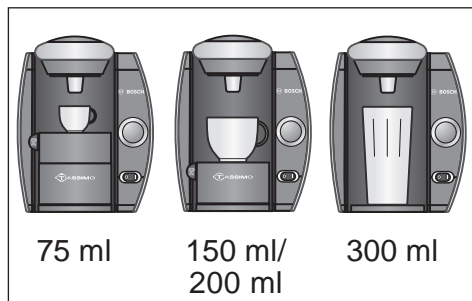
6e Descale 🚰

🚰 Descale icon lights up (red) when your TASSIMO machine needs to be descaled. Descalcify your appliance in accordance with the instructions provided under "Descaling".



Cup size

By adjusting the height of the cup stand, different sized cups and glasses can be used depending on your choice of drink. Use the default position for normal cups. To adjust the shelf for small cups (e.g. espresso cups), turn the height adjustment control counterclockwise until it clicks into place.

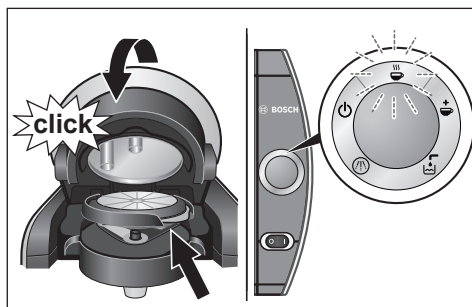


For large cups or glasses, the cup stand can be removed completely. To avoid overflowing, select the appropriate cup size for each type of drink:

Espresso:	min. 75 ml
Filter coffee & cafe crema:	min. 150 ml
Cappuccino & Tea	
& Hot chocolate beverages:	min. 200 ml
Latte macchiato:	min. 300 ml

How to use your TASSIMO machine

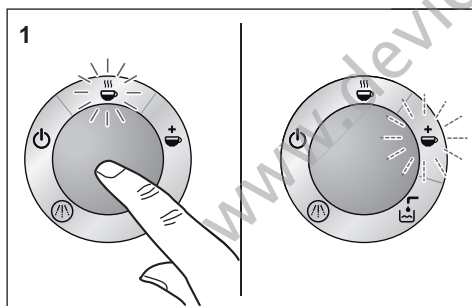
Important: Fill the water tank **exclusively** with cool fresh uncarbonated water every day for optimum flavour results. Do not use artificially or chemically softened water.



Your TASSIMO machine is ready for use. When ready, the ☺ Stand-by icon is lit.

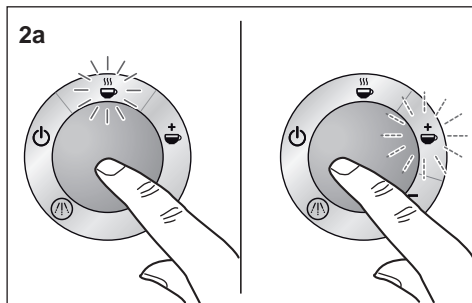
- Place a suitable cup on the stand according to the type of drink required. Adjust the height of the stand if necessary, or remove it altogether for large cups or glasses. Make sure the distance between the top of the cup and the brewing unit is small to avoid spattering.
- Open the brewing unit by lifting the lid.
- Select a T DISC and insert it in the T DISC holder with the printed side down. Make sure that the flap of the T DISC is secured in the slot to the right.
- Close the brewing unit by pushing the lid down firmly until it clicks into place. ☺ Stand-by flashes while the machine reads the barcode.
 - ☺ Automatic icon lights up (green) when your TASSIMO machine is ready to brew your drink.

Your TASSIMO machine is designed to make the optimal drink every time. It automatically brews your favourite drink, however you can also customise your drink with TASSIMO.



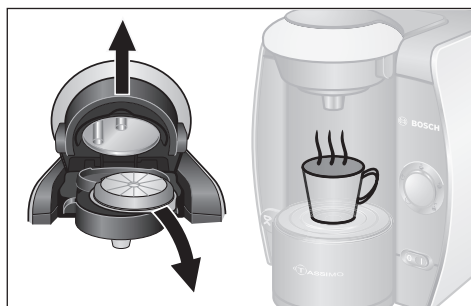
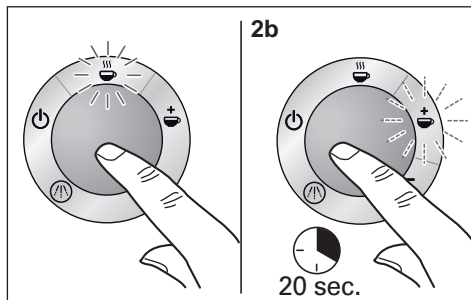
1. Automatic:

Start the brewing process by pressing the start/stop button. ☺ Automatic icon will flash. When the automatic brewing process is complete, ☺ Manual icon lights up. Your drink has been brewed for optimum flavour according to predefined settings.



2. Customised (manual operation):

- a. For a **stronger taste** and a **smaller drink**: Start the brewing process by pressing the start/stop button. ☺ Automatic icon will flash. Press the start/stop button at any stage during the brewing process to stop the process early and adjust the drink to your individual taste. Your drink is now ready. ☺ Manual icon lights up for 20 sec.



- b. For a **milder flavour** and a **larger drink**: Start the brewing process by pressing the start/stop button.

☕ Automatic icon flashes. When the automatic brewing process is complete, ☕ Manual icon lights up. If you press and hold the start/stop button within 20 seconds, you can extend the brewing process to get your desired drink strength.

- ▶ 20 seconds after the end of each brewing process, your TASSIMO machine returns to stand-by mode.
- ▶ Open the brewing unit and remove the T DISC. Now you can sit back and enjoy your hot drink. If you wish, you can prepare the next drink immediately.
- ▶ If you do not wish to prepare more drinks, we recommend that you turn off your TASSIMO machine using the on/off switch.

⚠ Risk of scalding

- **Wait until the orange light lights up before opening the brewing unit.**
- Never open the brewing unit during the brewing process.
- Please note that the beverages are very hot when dispensed.

📌 Note:

- ▶ There may be short pauses during the brewing process. This is so the drink flavour is optimised.
- ▶ Do not remove the water tank during the brewing process.
- ▶ Always remove the used T DISC after the brewing process. Be careful and hold it by the flap because the T DISC is hot after brewing your drink. When removing the T DISC, quickly flip it over so that the printed side is face up to avoid any dripping.

T DISC storage

T DISCS may be stored in their own packaging or in other containers of your choice. They should be stored in a cool, dry place. It is not necessary to store T DISCS in the refrigerator. Do not keep them in the freezer. Provided the outer packaging is intact, T DISCS may be used until the Best Before date provided.

Maintenance and day to day care

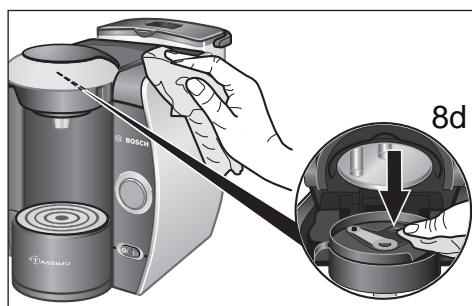
Risk of electric shock

Switch off and unplug the appliance before cleaning.

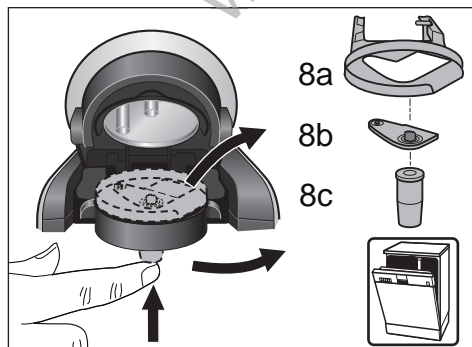
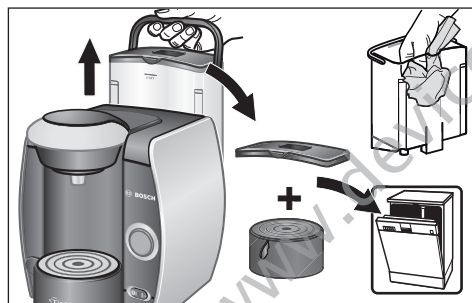
Never immerse the appliance in water.

Do not use a steam cleaner.

Clean your TASSIMO machine regularly to ensure that it continues to produce the optimal quality drinks. If the appliance has been unused for a long time, always run the cleaning process with the Service T DISC several times to ensure that the drinks it produces are of its normal high quality (see "First use of your TASSIMO machine"). Do not use scouring agents or steam cleaners.



- Clean the barcode scanner regularly (8d), so that the TASSIMO machine can scan the barcode on the T DISC properly.
- Wipe the outside of the appliance with a soft, damp cloth.
- Rinse out the water tank by hand and with water only, and do not place it in the dishwasher.
- The lid of the water tank and all parts of the cup stand can be washed in the dishwasher.
- Remove the T DISC holder (8a), the piercing unit (8b) and the drink outlet (8c) and clean thoroughly. All these parts can also be cleaned in the dishwasher. When preparing a number of drinks one after another, the piercing unit may be manually cleaned quickly and easily under running water.
- We recommend that you clean the brewing unit regularly using the Service T DISC as described under "First use of your TASSIMO machine".



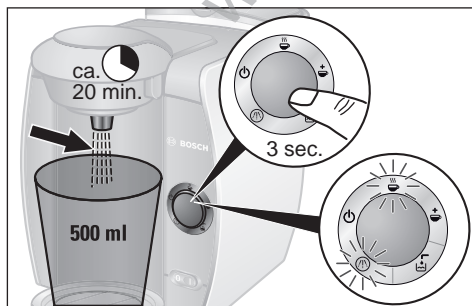
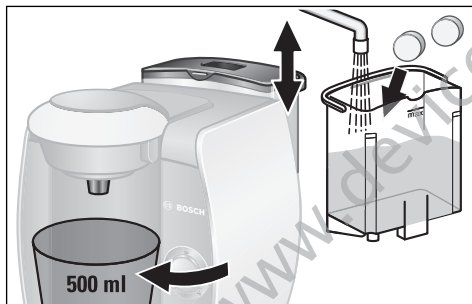
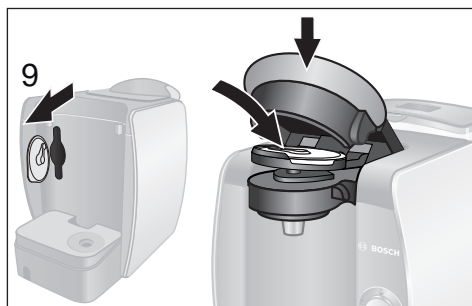
Attention: Piercing unit can be very hot immediately after brewing.

Important: After use, we recommend that the Service T DISC be stored in its compartment at the back of the appliance (9).

Note: After dispensing a milky drink or hot chocolate drink, we recommend that you first clean the piercing unit and then the brewing unit using the Service T DISC.

Descaling

Your TASSIMO machine has an automatic descaling programme. If ☹️ Descale icon lights up while the appliance is on, the descaling programme must be run immediately. If the descaling process is not run as instructed, the appliance may become damaged.



Special descaling agents can be obtained from the Bosch customer service department (article no. 310967, for contact details, see page 66) or from your retailer.

Note: *Never interrupt the descaling programme.*

Do not drink the liquids.

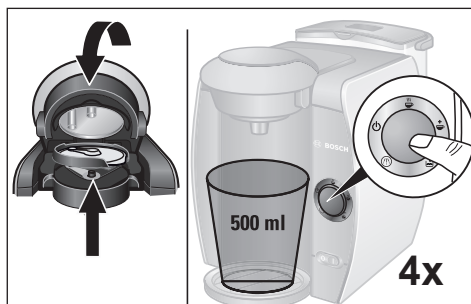
Never use vinegar or vinegar-based products.

Running the descaling programme

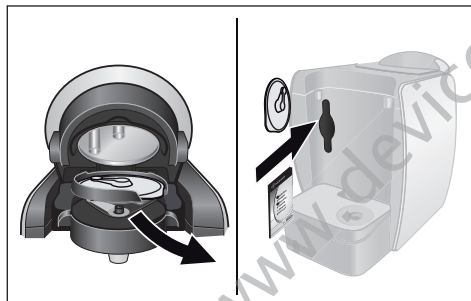
- ▶ Remove the water tank from your TASSIMO machine and Take the Service T DISC out (9). Insert it in the brewing unit with the barcode face down, and close the clamp down firmly.
- ▶ Prepare descaling solution according to the manufacturer's instructions and pour 500 ml into the water tank. (Increase the amount of descaling solution for hard water). A specially developed descaling agent is available from the Bosch customer service department (article no. 310967, for contact details, see page 66) or from your retailer.
- ▶ Remove the cup stand and place a suitable container (min. 500 ml capacity) under the drink outlet.
- ▶ **Press and hold the start/stop button for at least 3 seconds to start the descaling programme.**
- ▶ The programme now proceeds automatically and ☹️ Descale and ☕ Automatic icons flash. (Duration approx. 20 minutes). The descaling solution is pumped through the appliance at intervals and then runs into the container until the water tank is almost empty. A little liquid is always left in the tank.



- ▶ ⏻ Stand-by icon lights up after approx. 20 minutes of running descaling programme.
- ▶ Empty the container and replace it under the drink outlet.
- ▶ Rinse the water tank thoroughly and fill up to the MAX mark with fresh water.



- ▶ Open and close the brewing unit and press the start/stop button. The machine will rinse itself. Repeat this step another 4 times.
- ▶ The descaling process is complete.
- ▶ Now open the brewing unit, remove the Service T DISC and store it in the compartment at the back of the machine (9).
- ▶ Your TASSIMO machine is ready for use again.



Disposal




This appliance is labelled in accordance with the European Directive 2002/96/EG relating to waste electrical and electronic equipment – WEEE. The directive provides the framework for the EU-wide take-back and disposal of end-of-life appliances. Please ask your retailer about current disposal facilities.







Important: Bosch only manufactures the TASSIMO brewer. It therefore does not guarantee the availability of TASSIMO T DISCS. For T DISC inquiries please contact the TASSIMO careline.

All rights reserved.

Troubleshooting

The following table provides solutions for problems and glitches that may arise as you use your TASSIMO machine. If you do not find a solution for your specific problem, or the problem persists after troubleshooting please contact our customer service department.

Problem	Possible cause	Solution
Appliance not working; no symbols light up.	There is no power supply.	Check that the appliance is plugged into the power supply.
Machine brews but no drink dispensed.	The water tank was removed during the brewing process or there is air in the system.	Replace the water tank in the appropriate position in your TASSIMO machine. Start a cleaning process with the Service T DISC.
	The float in the water tank is stuck.	Clean the water tank and ensure the float can move.
 Automatic mode not working, appliance remains in stand-by mode.	No T DISC inserted.	Check if T DISC has been inserted.
	The barcode could not be detected.	Clean the bar code reading window and try again or smooth the barcode on the T DISC out with your thumb.
		Use another T DISC.
		If problems persist contact the TASSIMO careline. 0800 0328833
 Automatic mode skipped, appliance goes straight to  Manual mode.	The barcode could not be detected.	Clean the bar code reading window and try again or smooth the barcode on the T DISC out with your thumb.
		Use another T DISC.
		You can still prepare the drink by holding down the start/stop button.
The quality of the crema has deteriorated.	The drink outlet is clogged or dirty.	Remove the drink outlet from the brewing unit and detach the piercing unit. After cleaning everything thoroughly, reassemble the parts and replace them in the brewing unit.

Problem	Possible cause	Solution
Brewing unit cannot be securely closed.	The T DISC is not inserted properly.	Re-insert the T DISC and make sure it is properly positioned.
	The T DISC holder is not properly inserted.	Insert the T DISC holder properly.
	The brewing unit is not properly closed.	Push the clamp down firmly until it audibly clicks into place.
Water dripping from the brewing unit.	The T DISC is damaged or leaky.	Stop the brewing process, remove the T DISC and clean the brewing unit.
	The piercing unit is either not inserted or not inserted properly.	Check to ensure that the piercing unit is inserted properly.
Water on the surface under the cup stand.	Water from condensation.	Condensation may occur and is not a fault. Remove it by wiping with a cloth.
Service T DISC is damaged or lost.	The Service T DISC must always be used for cleaning and descaling processes.	Look for the Service T DISC in the storage compartment at the back of the appliance.
		The Service T DISC can be obtained from the Bosch customer service department (article no. 611632, for contact details, see page 66).
 Fill tank lights up even though there is sufficient water in the tank.	The float in the water tank is stuck.	Clean the water tank and ensure that the float can move.
 6d and  6e are flashing simultaneously and it is not possible to prepare drinks.	There is a fault on the machine.	Turn the machine off using the on/off switch, wait approximately 5 minutes and turn the machine back on. If  6d and  6e are still flashing, please contact the TASSIMO careline. 08 00 032 88 33
 Descal flashes even though you are using filtered or soft water.	Even soft water contains small amounts of dissolved lime.	Descale the appliance. A specially developed descaling agent is available from the Bosch customer service department (article no. 310967, for contact details, see page 66) or from your retailer.