



# EXTRACTOR COFFEE BREWER

## CBS-2042e

Twin 1 Gallon Brewer



## CBS 2040 Series

Our 1 gallon **CBS-2042e** twin coffee brewer makes great-tasting coffee with the touch of a button. This unit comes complete with our patented Cascading Spray Dome™, which helps deliver a consistent, perfectly balanced cup of coffee every time. You can brew directly into our self-serve **LUXUS®** Thermal dispensers and serve hot, fresh, aromatic coffee for hours.

Shown with the 1.0 Gallon **LUXUS®** Thermal Dispenser (L3D-10). The 1.0 Gallon **LUXUS®** Thermal Server (L35-10) is also available and both are sold separately.



**Cascading Spray Dome™** technology ensures perfect extraction of coffee flavor.

**Pulse-Brew System** delivers intermittent pulses of water to ensure even saturation of the coffee bed for enhanced extraction.



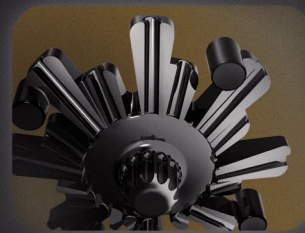
**Digital Interface** makes it easy to program and run brewer. Settings can be customized to your recipe.

**Pre-Wet Cycle** allows you to control the length of time water is in contact with the coffee before the brew cycle to ensure optimum flavor.



**Bypass Feature** redirects water directly into the dispenser, bypassing the coffee grounds in the brew basket, to provide your custom water-to-coffee ratio.

**Brew Time & Brew Volume** can be programmed separately to ensure a perfectly-balanced batch, no matter how much coffee you brew at once.



**Drip Delay** lets you set the time between the end of the brew cycle and the unlocking of the brew basket, for increased safety.

**FETCO**  
DRIVEN TO INNOVATION

## Water Specification

Water Inlet 3/8 inch Male Flare	Minimum Flow Rate 1 1/2 gpm [5.7 lpm]	Water Pressure 20-75 psig [139-517 kPa]
------------------------------------	--	--

## Electrical Configuration

Configuration Code	Heater Configuration	Voltage	Phase	Wires	KW	Electrical Connection	Max Amp Draw	Gallon[Liter]/Hour
<b>DOMESTIC &amp; CANADA</b> E42016	2 x 3.0 kW	120/208-240	1	3+G	4.6-6.1	Hardwired	22.4-25.8	11.5-15.4 [43.7-58.5] <sup>(1)</sup>
<b>EXPORT</b> E42026	2 x 3.0 kW	220-240	1	2+G	5.1-6.1	Hardwired	23.7-25.8	12.9-15.4 [49.0-58.5] <sup>(1)</sup>

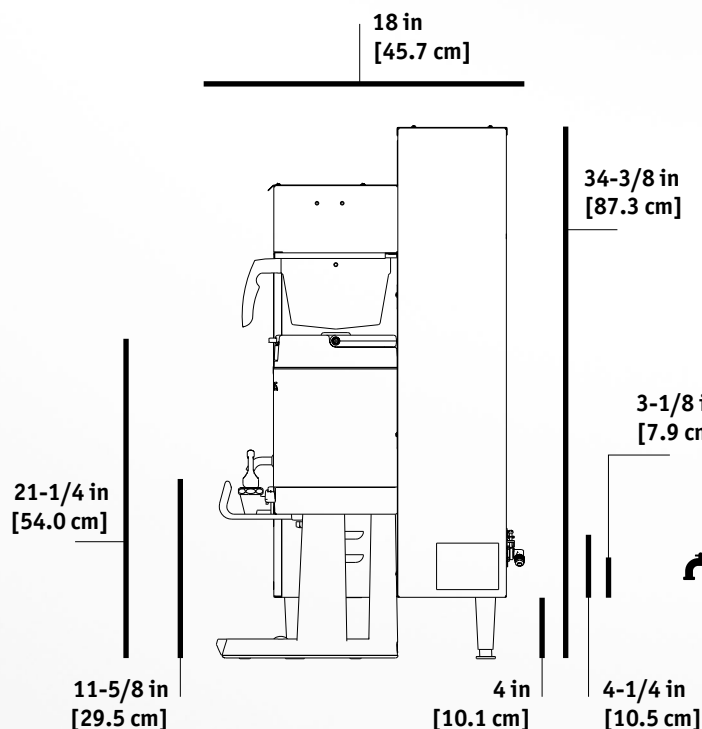
## Important

(1) Based on standard factory settings: 4.0 minute brew time; 0% prewet; 200°F water.

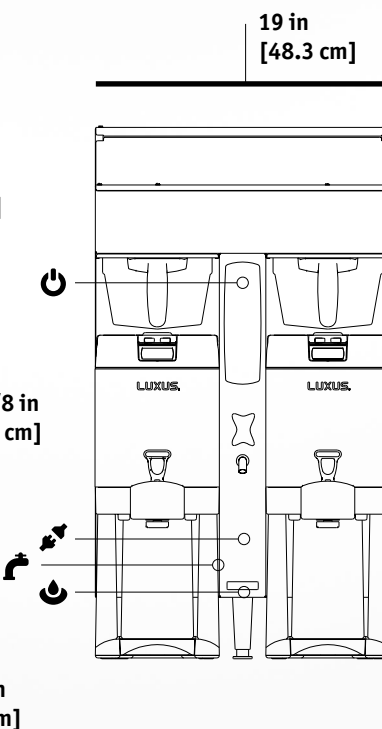
## Measurements

Height 34 3/8 in [87.3 cm]	Width 19 in [48.3 cm]	Depth 18 in [45.7 cm]	Empty Weight 53 lbs [24.0 kg]	Filled Weight 114 lbs [51.7 kg]	Shipping Weight 100 lbs [32.7 kg]
-------------------------------	--------------------------	--------------------------	----------------------------------	------------------------------------	--------------------------------------

### SIDE VIEW



### FRONT VIEW



### SYMBOLS

- Electrical Connector
- On / Off Switch
- Tank Drain
- Water Inlet

### DISPENSERS

Brewer can be used with:

L3S-10 Thermal Dispenser with Serving Station L3S-10

L3D-10 Thermal Dispenser



FETCO® is an active member of

## Information

[www.fetco.com](http://www.fetco.com)

+1 847.719.3000  
1.800.338.2699 USA  
 +1 847.719.3001

Food Equipment Technologies Co.  
600 Rose Road  
Lake Zurich, IL 60047  
USA